

2025



VICTORIA UNIVERSITY OF  
**WELLINGTON**  
TE HERENGA WAKA

**AKO PAI**

# EDUCATION











# CONTENTS

Ako pai—Education	2
Education and Educational Psychology for the Bachelor of Arts	4
Teacher education qualifications	8
Teaching—early childhood	10
Teaching—primary or secondary	12
Postgraduate pathways	14
Find out more	16



Te Herenga Waka—Victoria University of Wellington has been awarded an overall five-stars-plus rating in the QS Stars university rating system, one of only 17 universities worldwide to do so. The University gained a total score of 966 out of a possible 1,000 points across eight audited categories, including maximum points for the employability and inclusiveness categories. Maximum points were awarded for 25 of the more than 30 indicators, including overall student satisfaction; further study; graduate employment rate; international diversity, support, and collaborations; academic reputation; satisfaction with teaching; campus facilities; accreditations; art and cultural investment and facilities; disabled access; scholarships and bursaries; low-income outreach; and student cohort diversity.

**IMPORTANT NOTICE:** Te Herenga Waka—Victoria University of Wellington uses all reasonable skill and care to ensure the information contained here was accurate at the time it was prepared. However, matters covered by this publication are subject to change due to a continuous process of review, and to unanticipated circumstances. The University therefore reserves the right to make any changes without notice. So far as the law permits, the University accepts no responsibility for any loss suffered by any person due to reliance (either whole or in part) on the information contained in this publication, whether direct or indirect, and whether foreseeable or not.

# **AKO PAI EDUCATION**

Do you want to make a positive change in the world and transform lives for the better? Do you enjoy working with children and young people? Study Education at Te Herenga Waka—Victoria University of Wellington and discover its influence in shaping every aspect of our future, while also learning how you can make a difference to the lives of others.

## **THE SCIENCE AND POLITICS OF EDUCATION**

Discover how humans learn, explore the links between societies, cultures, and education, and learn to think critically with a Bachelor of Arts (BA) majoring in Education. Gain an excellent foundation for a career in many fields, including teaching, education, social policy, youth work, and community services. Find out more on page 4.

## **EDUCATIONAL PSYCHOLOGY**


Combine education with psychology and gain a deep understanding of education, learning, motivation, self-regulation, and developmental trajectories. We offer an accredited professional pathway, recognised nationally and internationally. Find out more on page 6.

## **TEACHER EDUCATION QUALIFICATIONS**

Learn to inspire children and young people and gain the tools and knowledge to help them grow and learn with our accredited teacher education programmes. Working from a commitment to Te Tiriti o Waitangi and to social, cultural, and ecological justice, you'll make a difference for teaching, learning, and wellbeing every day. Explore the pathways on offer from page 8.

## **WHY WELLINGTON?**

Whatever your pathway, our location in New Zealand's capital offers opportunities for career development. Gain professional teaching experience through our established network of schools and early childhood centres in Wellington and across Aotearoa New Zealand. Take advantage of our connections with the Ministry of Education and other public sector education institutions, and enjoy learning at the cutting edge of educational research.

A close-up portrait of Professor Carmen Dalli, a woman with short, wavy brown hair and glasses, smiling. She is wearing a black and white striped top. The background is blurred, showing what appears to be a window with a view of greenery.

▼

“If you’re interested in issues such as wellbeing, social justice, the challenges facing rangatahi, and the challenges facing our changing world, join us in learning about the transformative power of education. You will gain knowledge and skills to critically understand learning and learners, and how teaching and other educational professions can unlock life’s potential for our youngest citizens.”

**Professor Carmen Dalli**

Acting dean, Te Whānau o Ako Pai—  
Faculty of Education



# EDUCATION AND EDUCATIONAL PSYCHOLOGY FOR THE BACHELOR OF ARTS

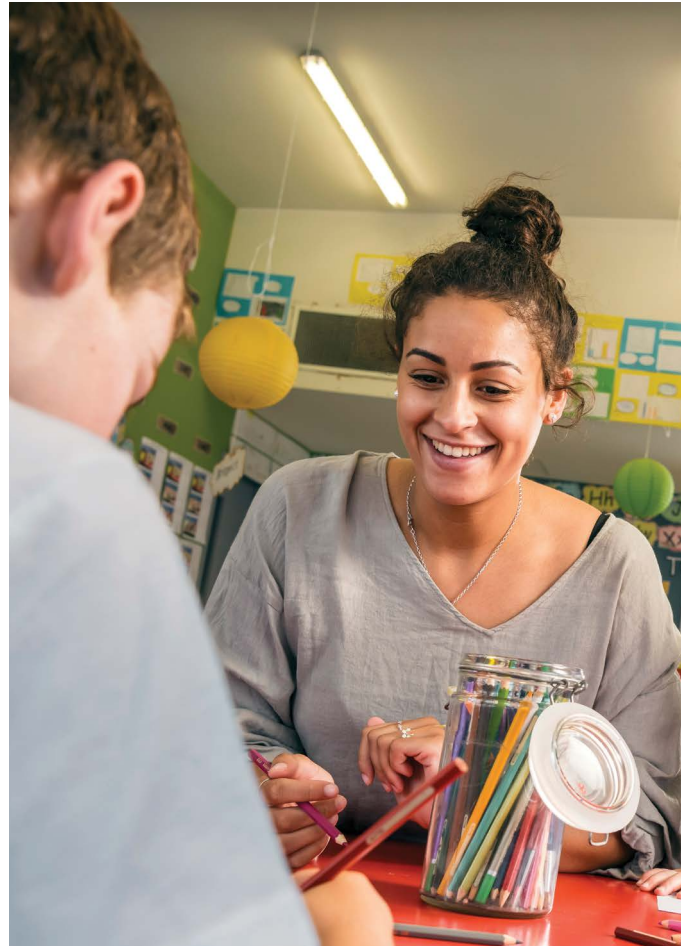
## EDUCATION

Education has the power to shape every aspect of our future, as it helps people gain the knowledge, skills, and attributes to become lifelong critical and active citizens. Studying Education as a major within the Bachelor of Arts will give you transferable knowledge and understanding to make judgements about education and analyse educational problems. Topics include education policy, educational psychology, human development and behaviour, Māori education, Pacific education, sociology of education, youth studies, and much more. You can add courses in disciplines such as Cultural Anthropology, Development Studies, History, Māori Studies, Pacific Studies, Sāmoan Studies, or Sociology for a well-rounded degree.

## Careers

There are many careers open to graduates with a BA in Education. You can work in areas such as child advocacy, community strategic planning, corrections and rehabilitation services, family support, migrant and refugee services, policy analysis, and youth work. Studying for a BA majoring in Education is also an ideal pathway if you wish to teach in early childhood or primary school contexts. Secondary school teaching requires a major in one school teaching subject, but courses in Education are also very beneficial.

**i** [www.wgtn.ac.nz/education-careers](http://www.wgtn.ac.nz/education-careers)





“Education and Psychology in the Bachelor of Arts overlap a little bit and that has enabled me to see different perspectives on the same topics. I find learning about methods of enhancing and promoting good human development for children and adults particularly interesting and think that it will be helpful in any people-focused career in the future.”

**Jessie Mok**

Student, Bachelor of Arts in Education and Psychology



# EDUCATIONAL PSYCHOLOGY

This interdisciplinary BA major is ideal if you are interested in learning how psychological principles can be applied to the field of Education. This major also provides you with the foundational knowledge needed to continue with postgraduate study in Educational Psychology (or Psychology, with approval) (see page 15) and go on to become a registered educational psychologist. Educational psychologists are concerned with improving the learning and wellbeing of individuals, including those who are experiencing social, emotional, or learning difficulties. Educational psychologists work in a range of community and educational settings, such as schools, classrooms, adult disability services, and early childhood education centres.

A BA major in Educational Psychology starts with first-year courses offering an introduction to human development and learning. As you move into the second and third years, you'll gain a deeper understanding of education, human development, learning, motivation, and neuroscience.

Students can also major in Educational Psychology as part of the Bachelor of Psychology.

## Careers

As well as working towards a qualification as an educational psychologist, our graduates with an Educational Psychology major have gained employment in the following areas: advocacy, community services, corrections, disability services, health promotion and rehabilitation, schools and early childhood education centres, strategic planning, sports psychology, and youth work. Within these fields, they have been employed as advocates, assessment and intervention specialists, education officers, health promoters, information specialists, policy analysts, research assistants, support workers, trainers and facilitators, and wellbeing advisers.

Studying for a BA majoring in Educational Psychology is a good pathway if you wish to teach in early childhood or primary school contexts.

**i** [www.wgtn.ac.nz/education-careers](http://www.wgtn.ac.nz/education-careers)



“I was motivated to learn more about supporting and advocating for those with different learning and support needs. The collaboration between education and psychology makes for a holistic and practical field and studying in this area equips you with a vast amount of applicable knowledge. The course encourages critical thinking and provides space for students to explore topics that are of most interest to them.”

### Sophia Kennedy

Graduate, Bachelor of Arts

Graduate, Master of Educational Psychology






Education and Educational Psychology are majors within the BA but are taught by schools in the Faculty of Education and the Faculty of Science. The qualification is administered by the Faculty of Humanities and Social Sciences.

# TEACHER EDUCATION QUALIFICATIONS

Gain the expertise and support you will need to teach with confidence and champion the learning of others. With our teacher education programmes, you will begin as a student and emerge ready to teach.

Your choices include a one-year qualification in early childhood, primary, or secondary teaching after graduating with an appropriate degree, or you can enrol in a three-year degree in early childhood education to be a registered early childhood teacher. You also have the option to study for the Graduate Diploma of Teaching (Secondary) over two years. With all our programmes, you will get opportunities to spend time in schools and centres, honing your practical skills as a teacher.

Our initial teacher education programmes are accredited by the Teaching Council of Aotearoa New Zealand. Successful completion of any of our programmes will enable you to be eligible for provisional teacher certification by the council. You can be recommended for full registration after two years (and up to five years) of satisfactory teaching and completion of your advice and guidance programme.

 [www.wgtn.ac.nz/education-careers](http://www.wgtn.ac.nz/education-careers)

## UNDERGRADUATE PREPARATION

Studying for an undergraduate degree provides an excellent pathway into teaching in early childhood centres and primary and secondary schools. To equip yourself to be the best teacher you can be, think carefully about your choice of courses in your degree.

If you are interested in primary teaching, you could consider a major in Education as well as in other subjects typically taught in schools. If you want to be a secondary teacher, you need appropriate-level study in at least one teaching subject in your degree.

Teachers also need a good understanding of Te Tiriti o Waitangi (the Treaty of Waitangi) in education so they can demonstrate a commitment to the treaty partnership. In addition, teachers need to be able to use te reo Māori, so you should consider including courses in your degree that will help develop these skills and knowledge.

You might also like to include courses that develop your individual strengths or interests, especially if these are relevant to education (for example, science, music, or drama).

We can provide advice about suitable courses to take to prepare for a graduate or postgraduate teaching qualification. For more information, go to [www.wgtn.ac.nz/teacher-education](http://www.wgtn.ac.nz/teacher-education) or contact the Faculty of Education student success team (see page 16).

If you are interested in teaching at secondary level, you can also check whether your degree choices are aligned with the New Zealand Curriculum school subjects—go to <https://tahurangi.education.govt.nz>



Below are some courses that we highly recommend as elective options in your undergraduate degree, whichever sector of the education system you are interested in.

- ▶ Academic writing (for example, WRIT 101)
- ▶ Education, particularly child and youth development (for example, EDUC 101, EDUC 141)
- ▶ Language and linguistics knowledge (for example, LING 111 and LALS 201)
- ▶ Māori studies and te reo Māori (for example, MAOR 101, MAOR 102)
- ▶ Mathematics education (for example, EDUC 136) is useful for primary teaching as it introduces mathematical knowledge needed to understand and teach mathematics effectively
- ▶ New Zealand history (for example, HIST 112) as this is now part of the compulsory curriculum
- ▶ Pacific studies (for example, PASI 101, SAMO 101)
- ▶ Science knowledge (for example, SCIS 101)
- ▶ Statistics (for example, STAT 193) is useful to enable primary and secondary educators to analyse assessment data to inform teaching.

There are additional entry requirements for enrolment into teacher education programmes. For information on this, go to [www.wgtn.ac.nz/education-admission](http://www.wgtn.ac.nz/education-admission)

## TEACHNZ SCHOLARSHIPS

The Ministry of Education offers a number of scholarships to support teacher education students. Go to [www.teachnz.govt.nz](http://www.teachnz.govt.nz) for more information.

## TEACH NEXT

Teach Next is a group for students completing an undergraduate degree at the University and planning to complete a teacher education programme. The group meets three to four times a year. There are invited speakers from the education sector, information sessions, and events that are focused on education and teaching. You can also connect with faculty staff who will answer questions about a teaching career.

✉ [teachnext@vuw.ac.nz](mailto:teachnext@vuw.ac.nz)



# TEACHING—EARLY CHILDHOOD

Early childhood teachers are among the most influential members of the community. The teaching and care they offer lay the foundation for success in education and in life. The programmes offered by the Faculty of Education will give you the skills to take on this responsibility with confidence and to enjoy the excitement, creativity, and fun of working with young children. We offer a strong focus on bicultural practice and creativity, and you will benefit from our staff's extensive professional experience across diverse early childhood education services.

## **BACHELOR OF EDUCATION (TEACHING) EARLY CHILDHOOD**

You can gain a degree-level qualification in early childhood teaching by choosing the Bachelor of Education (Teaching) Early Childhood (BEd(Tchg)EC). The degree takes three full years to complete and is taught through blended delivery, which includes online and campus-based activities. The BEd(Tchg)EC includes a dedicated first-year experience transition programme.

You can choose to complete this degree as a campus-based student or as a centre-based student.



## Campus-based option

- ▶ You will study in classes on campus for two days each week and have full-time blocks of professional practice (PP) placements in early childhood centres each year.
- ▶ Across your degree, you'll complete 24 PP placements in a range of early childhood centres.

## Centre-based option

- ▶ You will study in classes on campus for two days each week.
- ▶ You will be employed in a centre and complete at least 15 hours a week in your 'home' centre throughout Trimesters 1 and 2. It is also possible to be a volunteer in a centre.
- ▶ You will complete two blocks of PP placements: a four-week placement in your first year and another four-week placement in your second year.
- ▶ Your home centre must be fully licensed and there must be a qualified and fully certified teacher able to act as your associate teacher.
- ▶ The University will sign an agreement with you and your centre (and umbrella organisation, where applicable) each year.

Students will be able to transfer between the centre-based and campus-based options at specific times each year, giving students the flexibility to choose the study option that works best for them.

❗ [www.wgtn.ac.nz/bachelor-of-teaching-ece](http://www.wgtn.ac.nz/bachelor-of-teaching-ece)



▼

"I chose Early Childhood Education because I love working with tamariki and watching them grow and develop. Victoria University of Wellington was one of the few tertiary education providers in Wellington providing a face-to-face interactive learning experience that also offered flexible learning opportunities with time to work in the industry as well.

"This programme offers many opportunities to work and discover education and teaching. I most enjoyed the friends I made along the way and the variety of teaching styles from the experiences, lecturers, and teachers. Practical teaching placements were also a highlight for me as they gave you the opportunity to see the theory in practice and experience what teaching is like."

**Grace Ohlsson**

Graduate, Bachelor of Education (Teaching) Early Childhood

# TEACHING—PRIMARY OR SECONDARY

Teaching is a rewarding profession that offers you a way of making a positive change in the futures of the next generation. Our primary and secondary teacher education qualifications provide the knowledge and skills you need to excel as a leader of a learning community. This is a job where you can demonstrate your creativity, communication skills, and knowledge to transform lives. It provides a clear career path, with opportunities to work around New Zealand and beyond.

We offer two pathways to train as a primary or secondary teacher. For either pathway, we encourage you to check that your undergraduate degree choices will prepare you for a teaching qualification. For more information, go to [www.wgtn.ac.nz/teacher-education](http://www.wgtn.ac.nz/teacher-education) or get in touch with us.



## GRADUATE DIPLOMA OF TEACHING (PRIMARY OR SECONDARY)

If you already have an undergraduate degree that includes school-curriculum-related teaching subjects, these full-time, 10-month qualifications will prepare you to become a confident and competent beginning teacher who is able to make a positive difference to those you teach. These programmes are offered both on campus and online and cover a range of curricula offered in either primary or secondary schools. There are three blocks of supported teaching experience that enable you to put theory into practice in a classroom setting, and two campus-based learning sessions for both in-person and online students, which take place in Wellington at the beginning and end of the year.

If you choose the secondary option, your teaching subjects will be allocated during enrolment and are dependent on what you have studied previously and the curriculum subjects offered by the Faculty of Education. You will need one subject, usually your undergraduate major subject, studied to 300 level or at a postgraduate level. You may also have another subject, or minor, that you have studied to at least 200 level. One teaching subject is sufficient for entry to this programme. The Graduate Diploma of Teaching (Secondary) is offered as a one-year or two-year programme. You can also check whether your degree choices are aligned with the New Zealand Curriculum school subjects—go to <https://tahurangi.education.govt.nz>

- i** [www.wgtn.ac.nz/grad-dip-primary](http://www.wgtn.ac.nz/grad-dip-primary)
- i** [www.wgtn.ac.nz/grad-dip-secondary](http://www.wgtn.ac.nz/grad-dip-secondary)



## MASTER OF TEACHING AND LEARNING (PRIMARY OR SECONDARY)

The Master of Teaching and Learning (Primary) and Master of Teaching and Learning (Secondary) are full-time 180-point qualifications that you can complete over 10 months of study between February and November each year. These programmes integrate theory and practice as you study effective teaching methods both on campus and while based at a school in the Wellington area.

The intake for these programmes is usually limited to 35 students at each level of schooling. You will need to have gained an undergraduate degree in a relevant learning area at a level appropriate for postgraduate study and demonstrated an appropriate disposition to teach.

If you choose the secondary option, the targeted teaching subjects are usually English, mathematics, science (chemistry, physics, biology), social sciences (history), and te reo Māori. Other teaching subject areas will be considered, subject to academic mentor availability. Get in touch with us for the most up-to-date information.

 [www.wgtn.ac.nz/master-teaching-primary](http://www.wgtn.ac.nz/master-teaching-primary)

 [www.wgtn.ac.nz/master-teaching-secondary](http://www.wgtn.ac.nz/master-teaching-secondary)

## New Zealand Certificate in Christian Studies—Religious Education

The Faculty of Education provides opportunities for you to complete a nationally recognised certificate in Christian Studies, which is offered through Te Kupenga—Catholic Theological College. Although this sits outside a teacher education programme of study, a teaching experience in a Catholic school is included. The delivery of the qualification has been customised to suit the University's timetable. The certificate enables you to teach the religious education curriculum in Catholic and other state-integrated schools. Graduates with the certificate are highly sought after for employment in those schools. Further information is at [www.tekupenga.ac.nz](http://www.tekupenga.ac.nz)

# POSTGRADUATE PATHWAYS

## RESEARCH-BASED PROGRAMMES

If you want to pursue your studies in education at a higher level, we have a number of postgraduate programmes that can lead to a range of policy, research, or advocacy careers in education, including tertiary education.

### Bachelor of Arts with Honours in Education

(120 points at 400 level) Build on your Bachelor of Arts in Education and engage in critical and reflective analysis of many of the central issues facing education. Includes a core 30-point research component.

**i** [www.wgtn.ac.nz/ba-hons](http://www.wgtn.ac.nz/ba-hons)

### Master of Arts in Education

(120 points) An advanced one-year postgraduate qualification comprising a thesis—a substantial piece of research supervised by a member of staff with expertise in the relevant area. Admission to this programme normally requires a Bachelor of Arts with Honours degree with First or Second Class Honours.

**i** [www.wgtn.ac.nz/master-of-arts](http://www.wgtn.ac.nz/master-of-arts)

### Doctor of Philosophy in Education

Studying for a Doctor of Philosophy (PhD) in Education offers opportunities for you to work with acknowledged experts on a substantial and original research project in an area of education. A PhD is the highest degree awarded by the University.

**i** [www.wgtn.ac.nz/phd](http://www.wgtn.ac.nz/phd)

## COURSEWORK PROGRAMMES FOR EDUCATION PROFESSIONALS

We also provide a range of qualifications designed to enable education professionals (teaching or otherwise) to engage in further study relevant to their work and to undertake thesis research in an area of interest. You can tailor your study to suit your personal, professional, and academic needs with a range of courses and delivery options. Study can be entirely online or a combination of online and campus-based courses.

### Master of Education

An advanced 12-month (if studied full time) postgraduate qualification comprising 180 points that can be completed entirely by coursework or by a combination of coursework and a thesis or dissertation. (Note that a Postgraduate Certificate of Education (60 points) and a Postgraduate Diploma of Education (120 points) are also available as first steps into postgraduate study.)

**i** [www.wgtn.ac.nz/master-of-education](http://www.wgtn.ac.nz/master-of-education)

### Master of Secondary School Leadership

This 180-point qualification is suitable for middle or senior leaders in secondary schools who aspire to be secondary school principals. It focuses on the specific leadership capabilities and practices needed in secondary schools and is a part-time two-year programme.

**i** [www.wgtn.ac.nz/mssl](http://www.wgtn.ac.nz/mssl)

### Doctor of Education

The Doctor of Education is designed for experienced professionals working in diverse roles in education and related fields who wish to gain a research-based and professionally focused doctoral degree. It consists of a combination of taught courses and a substantial research project that will form a thesis.

**i** [www.wgtn.ac.nz/doctor-of-education](http://www.wgtn.ac.nz/doctor-of-education)

# EDUCATIONAL PSYCHOLOGY PROGRAMMES

If you are specifically interested in pursuing a career in the field of educational psychology, these postgraduate programmes will prepare you.

## Master of Educational Psychology

This is a two-year, 240-point Master's programme consisting of 10 compulsory courses.

## Postgraduate Diploma of Educational Psychology Practice

Completion of the Master of Educational Psychology will allow you to apply for the Postgraduate Diploma of Educational Psychology Practice. This is a one-year internship programme that can lead to registration as an educational psychologist in New Zealand.

**i** [www.wgtn.ac.nz/postgraduate-educational-psychology](http://www.wgtn.ac.nz/postgraduate-educational-psychology)



"I've loved how passionate the lecturers are about uplifting education and life outcomes for others, and the importance they place on creating conditions that learners and children need to do and live their best. Their openness to sharing their experiences, insights, and knowledge from their professions has also been really encouraging and inspiring. I have only had good experiences with accessing academic and mental health support while studying at Victoria University of Wellington, and the team in the Āwhina Māori hub work really hard to share information and bring students in to create an environment that fosters a sense of belonging for Māori students.



"I really would like to use what I have learnt from my undergraduate degree, the Master's degree, and lived experiences to help other whānau and their tamariki with their education pathways and finding support. Our teachers have such an important role in our children's development, and I would like to be able to collaborate and support them and our schools in the ways they need."

**Stacey Reedy**

Student, Master of Educational Psychology



# FIND OUT MORE

**i** [www.wgtn.ac.nz/education](http://www.wgtn.ac.nz/education)

**i** [www.wgtn.ac.nz/apply](http://www.wgtn.ac.nz/apply)

## ADMISSION AND ENROLMENT

You can apply for admission up to two years in advance of the year you plan to start studying. Apply through our student portal, Pūaha. Once you have met the requirements, you will receive either a conditional or an unconditional Offer of Place. Accept your offer to confirm your admission.

After accepting your Offer of Place, you will be invited to select your courses once course enrolment is open. You select courses for one academic year at a time.

Each of our programmes has a different date for selection meetings and application deadlines. Go to the programme websites for the most up-to-date information.

**i** [www.wgtn.ac.nz/puaha](http://www.wgtn.ac.nz/puaha)

## ENTRY REQUIREMENTS

To enrol in an undergraduate qualification, you will need University Entrance, or to meet the requirements of another admission type. To enrol in our postgraduate qualifications, you will need to check the entry requirements on each qualification's website.

**i** [www.wgtn.ac.nz/study](http://www.wgtn.ac.nz/study)

## TEACHER EDUCATION QUALIFICATIONS ADMISSION

You will need to meet some additional criteria and provide some information beyond what is required by the University to apply for admission for any of the teacher training programmes. This includes supplying the names of referees, making a declaration regarding any criminal convictions or health and disability issues, and successfully taking part in a selection meeting, where you will introduce yourself in te reo Māori and complete a literacy and numeracy test as required by the Teaching Council of Aotearoa New Zealand. We offer specific selection events for Māori and Pacific applicants who would prefer a whakawhanaungatanga or talanoa approach.

**i** [www.wgtn.ac.nz/education-admission](http://www.wgtn.ac.nz/education-admission)

## CONTACT US

Te Whānau o Ako Pai

Faculty of Education

Student Service Centre

Level 4, Murphy Building, Kelburn Parade, Kelburn,  
Wellington 6140

📞 0800 04 04 04

✉ [info@vuw.ac.nz](mailto:info@vuw.ac.nz)

**i** [www.wgtn.ac.nz/education](http://www.wgtn.ac.nz/education)

## OTHER STUDENT RESOURCES

### Disability support

**i** [www.wgtn.ac.nz/disability](http://www.wgtn.ac.nz/disability)

### Māori student support

**i** [www.wgtn.ac.nz/awhina](http://www.wgtn.ac.nz/awhina)

### Pasifika student success

**i** [www.wgtn.ac.nz/pasifika](http://www.wgtn.ac.nz/pasifika)

### Rainbow student support

**i** [www.wgtn.ac.nz/rainbow](http://www.wgtn.ac.nz/rainbow)

### Refugee-background student support

**i** [www.wgtn.ac.nz/refugee-background-students](http://www.wgtn.ac.nz/refugee-background-students)

### Scholarships

**i** [www.wgtn.ac.nz/scholarships](http://www.wgtn.ac.nz/scholarships)

### Student services and support

**i** [www.wgtn.ac.nz/student-support](http://www.wgtn.ac.nz/student-support)



