

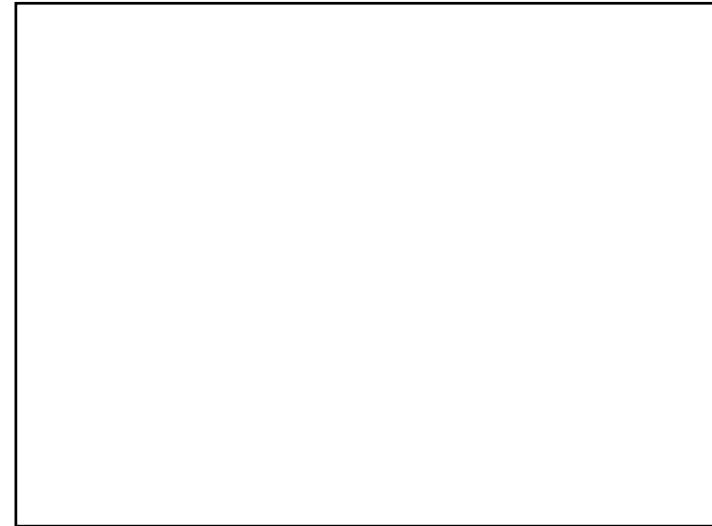
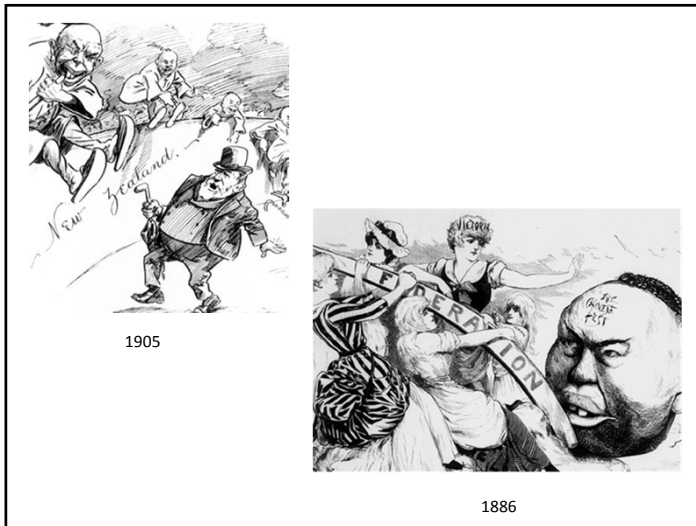
## China & Samoa

### Intimate Relations

Damon Salesa  
Associate Professor  
Director of Pacific Strategy and Engagement  
University of Auckland

Beche de Mer. Loli, Fugafuga. Hǎishēn.





## The Chinese in New Zealand Samoa

Year	Recruited	Repatriated	Total in Samoa
1914			2,184
1920			838
1920-1	502	13	1,321
1921-2	930	658	1,591
1922-3		250	1,328
1923-4		353	967
1924-5		207	752
1925-6	280	134	888
1926-7	180	112	946
1927-8		2	935
1928-9	456	419	965
1929-30		4	953
1930-1	254	288	917
1931-2	207	404	712





## The Chinese Consul, Apia (1923)



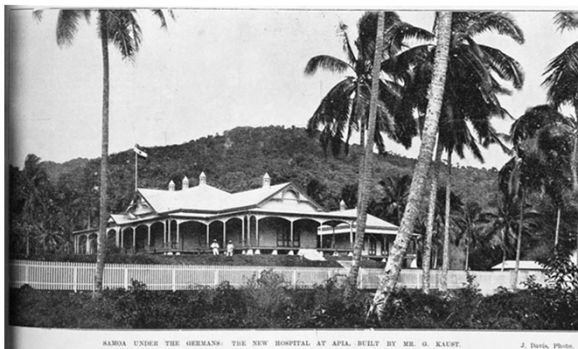
BRITISH GOVERNOR OF WESTERN SAMOA ENTERTAINED AT THE  
CHINESE CONSULATE, APIA, ON APRIL 21.

## Proclamation No.42

- Which forbade Chinese men from being within Samoan residences, and allowed for both Samoans and Chinese to be charged.
- Prosecutions, chiefly of Samoan women and Chinese men were made.

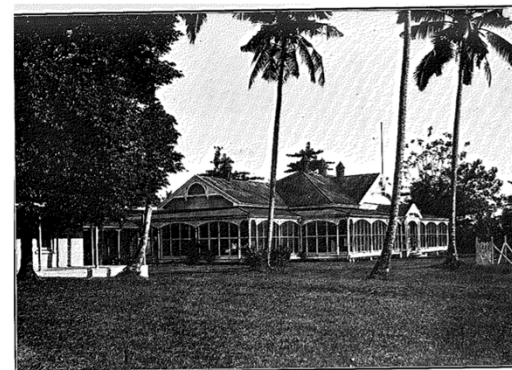


## A Racial Hospital



SAMOA UNDER THE GERMANS: THE NEW HOSPITAL AT APIA, BUILT BY MR. H. KAUPE. J. Datta, Photo.

## European Hospital, Apia

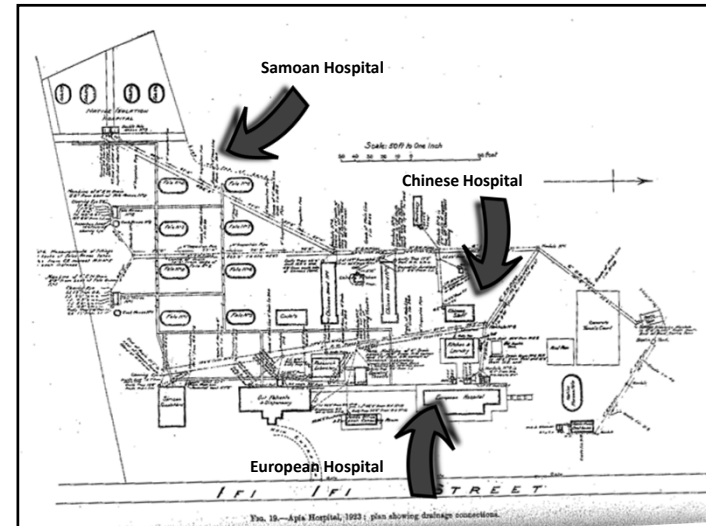


EUROPEAN HOSPITAL, APIA: BUILT 1912, MOSQUITO-NETTED 1921

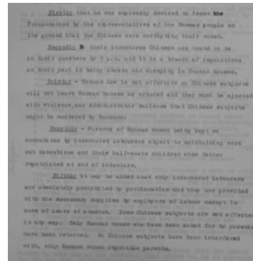
## The Native Hospital, Apia



PORTION OF SAMOAN SECTION OF APIA HOSPITAL.  
(The Poles in the Background are the Isolation Faes.)



## Strategic Intimacy



When intimate, quotidian relations have strategic effect

## Fung Kuoi Kee Ah Kuoi & 'Āiga



Source: ahkuoi.com

Recent Debate over the Citizen Investment Bill 2014.

