

INTERNATIONAL STUDENTS

# STUDY IN WELLINGTON

FOR NEW ZEALAND  
SECONDARY SCHOOLS



**CAPITAL  
THINKING.  
GLOBALLY  
MINDED.**  
MAI I TE IHO KI TE PAE

# WELLINGTON IS AN IDEAL PLACE TO STUDY



## CREATIVE

Wellington was named New Zealand's most creative city. It is home to Weta Workshop, Te Papa, the World of Wearable Arts, the New Zealand Festival of the Arts, and more. *Infometrics, 2017*



## HIGH TECH

Wellington is the tech capital of New Zealand, with more web-based and digital technology companies than anywhere else in the country. *New Zealand Trade and Enterprise, 2016*



## DIVERSE

27 percent of people who live in Wellington were born outside of New Zealand, making it a diverse and welcoming city. *Statistics New Zealand, 2018*



## SAFE

Wellington is a safe and friendly place to live—it is ranked the 5th safest city in the world for personal security. *The Economist Safe Cities Index, 2019*

# WELCOME TO WELLINGTON

Welcome to Victoria University of Wellington—one of New Zealand's oldest, largest, and most prestigious universities. As an international student, you will be joining 3,200 other international students in a vibrant academic community with an outstanding reputation for success.

## JOIN OUR FACEBOOK GROUP

Got questions? Our international student ambassadors are available to chat in our dedicated Facebook group for international students at New Zealand secondary schools.

[www.wgtn.ac.nz/international-secondary-students-nz](http://www.wgtn.ac.nz/international-secondary-students-nz)

## LEARN MORE FROM OUR STUDENT AMBASSADORS

“Victoria University of Wellington’s friendly and warm vibe never fails to make international students like us feel at home.”



## TOP TIPS

Here are some tips from our international student ambassadors about preparing for University and your transition to University life. Like you, they have all studied at New Zealand secondary schools and know the student journey you're on.

### 1. Don't worry!

Don't worry too much about uni yet. Once you've applied, just focus on your school assessments and exams. Make sure to enjoy the last few moments of secondary school.

### 2. Find out what Uni is like

The University offers tours if you want to come and feel the uni vibe, see the halls of residence, sit in some lecture theatres, or do your course plan. The Open Days are really fun. If you can't make it to Wellington in person, you can sign up for their online events.

### 3. Be organised

Prepare to be independent and have good time management skills at uni. Put up a planner on your wall and mark it with key due dates of your course assessments. Also, have your timetable on your devices on the first day, noted with the rooms where you will have lectures and tutorials in. This way, you won't feel too lost, especially during the first few days.

### 4. Keep asking questions

The best way to understand your course content is to communicate with your tutors and teachers—email them and keep in touch! Ask as many questions as you need until you are confident in the content you're learning.

### 5. Use all the support services

The Uni provides really great student support services—from essay writing (Student Learning) to counselling and health services, which are all available on campus. Make the most of these services to help you succeed not only in your first year but throughout your degree.

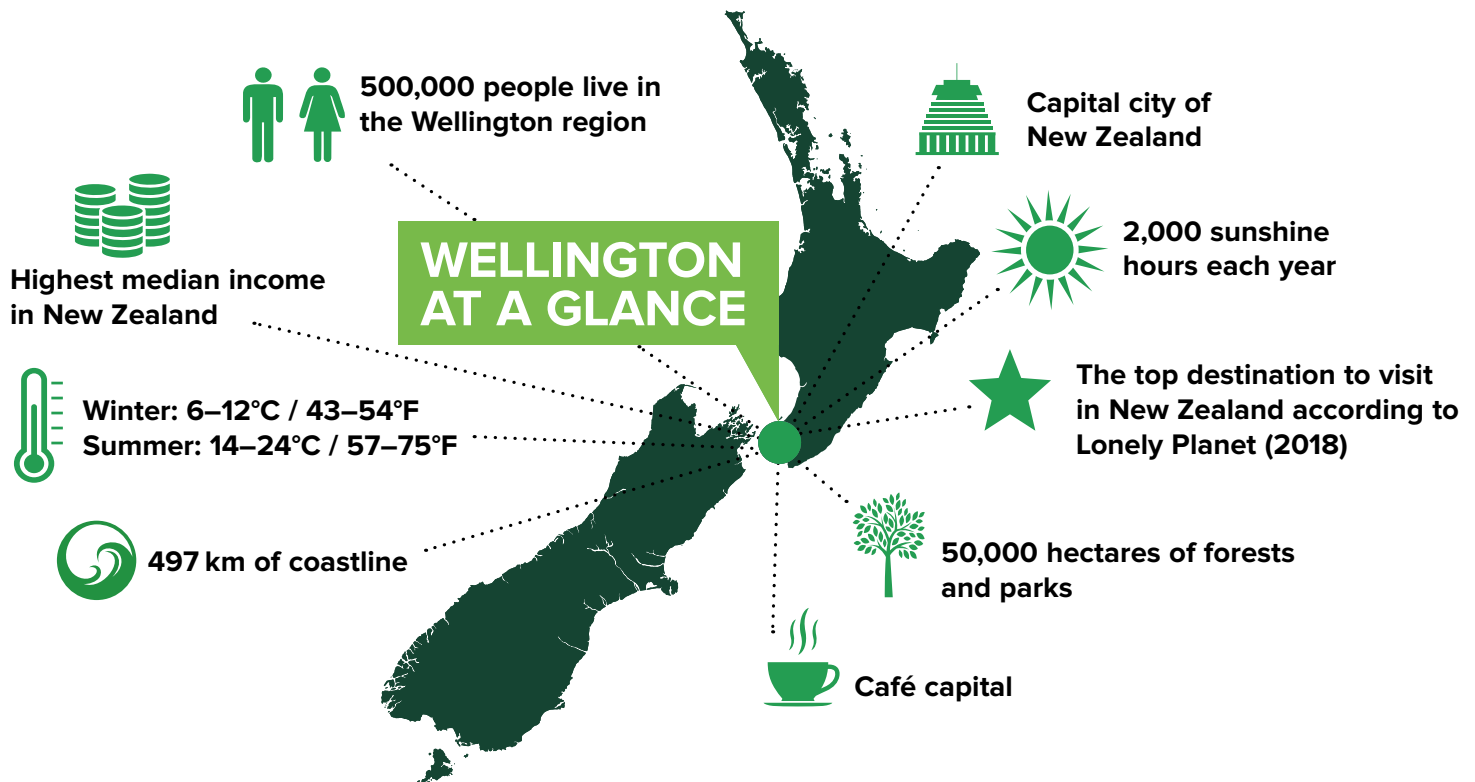
### 6. Join in!

Get involved in the uni's social activities (such as joining clubs and attending extracurricular activities at the Rec Centre/Uni Gym) to help you meet like-minded people and find the things you love doing.

# ABOUT WELLINGTON

Wellington is the geographic, political, and cultural heart of New Zealand. Within the beautiful harbour setting of the world's second most liveable city\*, you'll find a great quality of life, a strong global outlook, and a study experience to remember.

\*Deutsche Bank Quality of Life Survey, 2019



# ABOUT VICTORIA UNIVERSITY OF WELLINGTON

Become part of New Zealand's thriving capital city university, and enjoy our world-class learning and teaching environment.



**TOP 1%**

OF THE WORLD'S  
UNIVERSITIES IN  
19 SUBJECT AREAS

(QS WORLD UNIVERSITY RANKINGS BY SUBJECT, 2020)

**NZ\$12M**

IN SCHOLARSHIPS  
AWARDED EACH YEAR

**22,000+**  
STUDENTS

**8** TEACHING  
FACULTIES

**27**  
SCHOOLS

**TOP 2%**

OF THE WORLD'S  
18,000  
UNIVERSITIES

(QS WORLD UNIVERSITY RANKINGS, 2020)

**3,200**

OF OUR INTERNATIONAL STUDENTS  
COME FROM MORE THAN

**100** COUNTRIES AROUND  
THE WORLD

**196**

PARTNER  
UNIVERSITIES IN

**39** COUNTRIES

## WHAT YOU COULD STUDY



Architectural Studies  
and Building Science



Education and Teaching



Law



Business and Government



Engineering and Digital  
Technologies



Music and Theatre



Design, Film, and Media



Health



Science



Humanities



Social Sciences

# CAMPUSES

Victoria University of Wellington has three central city campuses, all within walking distance of each other.



## KELBURN

Kelburn is home to the Humanities and Social Sciences, Education, Health, Science, and Engineering faculties. The New Zealand School of Music—Te Kōkī (NZSM) can also be found here. The main campus hosts a wide range of student services as well as a purpose-built student hub for socialising and studying.



## PIPITEA

The Pipitea campus is located in the heart of Wellington city, right next door to the New Zealand Parliament, Supreme Court of New Zealand, and the central business district. This is where Business and Law students spend most of their time.

## TE ARO

Te Aro is the University's Architecture and Design hub, in a purpose-built campus to get those creative thoughts flowing. It is also next to Cuba Street—Wellington's culinary and creative soul.



# LIFE ON CAMPUS

Being a university student is about so much more than just books—it's about getting involved, meeting new people, and trying out new things.



## INTERNATIONAL BUDDY PROGRAMME

Being paired with a current Victoria University of Wellington student is a great way to settle into life in the capital. You get to find out information about life as a university student, receive advice about flatting and living in Wellington, go to social events, and gain new friends.

**i** [www.wgtn.ac.nz/international-buddy](http://www.wgtn.ac.nz/international-buddy)

## NEW STUDENTS' ORIENTATION

Our New Students' Orientation is your opportunity to find your way around campus, meet new people, and pick up some vital academic preparation skills. Orientation is held the week before the University starts for the year.

**i** [www.wgtn.ac.nz/orientation](http://www.wgtn.ac.nz/orientation)

## CAMPUS COACHES

The Campus Coaches programme sets you up in a group with other first-year students in your faculty, led by a senior student who can show you around and give you tips when you first arrive.

**i** [www.wgtn.ac.nz/campus-coaches](http://www.wgtn.ac.nz/campus-coaches)

## UNIVERSITY RECREATION WELLINGTON

Give your student experience a boost by getting involved with University Recreation Wellington. Keeping healthy, active, and connected will support your academic aspirations.



## CLUBS AND SOCIETIES

With more than 140 clubs on campus, including cultural, performing arts, political, social, religious, and sporting groups, there's sure to be a club for you:

- Arts Society
- Asian Law Students Association
- Athletics
- Badminton
- Basketball
- Beta Alpha Psi
- Cambodian Students Association
- Chess Club
- Chinese Students Association
- Debating
- Dragon Boating
- Engineering Club
- Esports (VESA)
- Film Society
- Football
- German Club
- Handball
- Japanese Students' Association
- Korean Association
- Lacrosse
- Latin American and Spanish Club
- Malaysian Students' Organisation
- Rowing Club
- Rugby League
- Sailing Club
- Sci-Fi Club
- Snow Sports Club
- Tennis
- Taekwon-Do
- Toastmasters
- Vietnamese Students' Association
- And many more!

## FITNESS

Signing up for a fitness membership can give you access to machine weights and free weights, a comprehensive selection of cardio equipment, and our popular group exercise classes.

## SPORTS AND EVENTS

University Recreation Wellington runs a number of sports and events, from casual and socially competitive sports leagues, to national tertiary sport competitions, and support for high-level athletes. They also offer a range of events and programmes, from Glow Yoga classes and Zumba parties to first-aid and self-defence courses.

**i** [www.wgtn.ac.nz/recreation](http://www.wgtn.ac.nz/recreation)

## WELLINGTON INTERNATIONAL LEADERSHIP PROGRAMME

If you're interested in world affairs, global issues, and communicating across cultures, then this free, award-winning programme is for you. It is academically oriented around seminars, speaker events, and activities designed to inspire students to think creatively about how to address global leadership challenges. Step out of your comfort zone, get involved, and kick-start an internationally focused career.

**i** [www.wgtn.ac.nz/international-leadership](http://www.wgtn.ac.nz/international-leadership)

## WELLINGTON PLUS PROGRAMME

Wellington Plus is a leadership programme that aims to develop your social responsibility and leadership skills with opportunities to volunteer in the community and take part in workshops and seminars.

**i** [www.wgtn.ac.nz/wellington-plus](http://www.wgtn.ac.nz/wellington-plus)



## STUDENT EXCHANGE

The Wellington Global Exchange programme provides the opportunity to enhance your degree and experience another culture by completing one or two trimesters at one of our overseas partner universities. Victoria University of Wellington has more than 140 exchange partner universities across 35 countries around the world. International students can study on exchange while paying their normal Victoria University of Wellington tuition fees.

**i** [www.wgtn.ac.nz/exchange](http://www.wgtn.ac.nz/exchange)



# STUDENT SERVICES

## INTERNATIONAL STUDENT SERVICES

International students at Victoria University of Wellington have support from a dedicated team at the University. The staff at Wellington University International are here to help you from when you first apply until you graduate. Services include:

- International applications and admissions
- Personal, cultural, and academic support and referral
- Insurance claim support
- Student visa renewal
- International student events
- International Buddy Programme
- Arrival meeting service.

**i** [www.wgtn.ac.nz/international](http://www.wgtn.ac.nz/international)

## ARRIVAL MEETING SERVICE

Wellington University International provides a free meeting service for all new international students. You can complete an online form at least three days before you arrive to let us know when you will arrive in Wellington, and we will meet you and take you to your accommodation.

**i** [www.wgtn.ac.nz/meeting-service](http://www.wgtn.ac.nz/meeting-service)

## CAREERS AND EMPLOYMENT

Our Careers and Employment team can help you apply for jobs and internships, offering professional advice on career planning, job exploration, and career development. They also run free workshops on CVs, cover letters, interview tips, and other career-related topics.

**i** [www.wgtn.ac.nz/careers](http://www.wgtn.ac.nz/careers)

## STUDENT JOB SEARCH

Student Job Search is a not-for-profit organisation dedicated to helping tertiary students find work while they study.

**i** [www.sjs.co.nz](http://www.sjs.co.nz)

## SERVICES AND FACILITIES ON CAMPUS

- Adam Art Gallery
- Bookshop
- Cafés
- Campus Safety Office
- Careers and Employment
- Chaplaincies
- Disability Services
- Early Childhood Education Services
- Enrolment Office
- Financial Support and Advice
- Info Ihonui (Information/help desks)
- IT Services
- Library
- LGBTQIA+ Support Services
- Parking
- Pasifika Haus
- Pharmacy
- Student Counselling
- Student Health
- Student Islamic Centre (Prayer rooms)
- Student Job Search
- Student Learning
- Te Herenga Waka Marae
- Travel Agent
- University Accommodation Wellington
- University Recreation Wellington
- Victoria University of Wellington Students' Association (VUWSA)
- Wellington Global Exchange
- Wellington University International

## STUDENTS UNDER 18

The University has special obligations to students under the age of 18 years to ensure you are well looked after.

- Your parent or legal guardian must sign the Parental/Guardian Consent Form before your enrolment is finalised. You will not be able to complete your enrolment at the University until this form is completed and returned.
- You will meet with your International Student Advisor each trimester to discuss your wellbeing and academic progress. Your advisor will contact your parents once a trimester to discuss your progress.
- You are required to stay in a catered hall of residence, a homestay provided through Host Families New Zealand, with your parents, or with a caregiver designated by your parent(s)/guardian(s).

**i** [www.wgtn.ac.nz/international-under-18](http://www.wgtn.ac.nz/international-under-18)

# SCHOLARSHIPS

## NEW ZEALAND INTERNATIONAL SCHOOL-LEAVER GRANT

This **NZ\$2,000** grant is to support international students currently studying at a secondary school in New Zealand to study at Victoria University of Wellington.

There is no application procedure for this grant. All eligible students will automatically receive the grant when they enrol in a full-time degree programme at the University. For more information, go to

**i** [www.wgtn.ac.nz/international-grant](http://www.wgtn.ac.nz/international-grant)

## WELLINGTON INTERNATIONAL EXCELLENCE SCHOLARSHIP

These scholarships are available to high-achieving international students currently studying in New Zealand.

Value: **Up to NZ\$20,000** over three years of study

Applications close: **2 September**

Applicants with an NCEA Level 2 (or 3) Certificate endorsed with Excellence are encouraged to apply. Excellence credits must be obtained in Year 11 or 12; credits gained in Year 13 cannot be included. Applicants with an equivalent level of achievement in an alternative qualification such as International Baccalaureate (IB), Cambridge International Examinations (CIE), or Rudolph Steiner qualifications are also encouraged to apply.



## SCHOOL-LEAVER SCHOLARSHIPS

All school-leaver scholarships are open to international students who have been enrolled at a New Zealand secondary school for at least two years.

### Tangiwai Scholarship

This scholarship celebrates excellence—both academic and outside the classroom. It is valued at **NZ\$5,000**.

### Totoweka Scholarship

This scholarship is to support strong academic applicants who are Māori; Pasifika; from refugee-backgrounds; have a disability; or come from socio-economically disadvantaged backgrounds. It is valued at **NZ\$5,000**.

### Kahotea Scholarship

This scholarship recognises exceptional students and is valued at **up to NZ\$30,000** over three years of study at the University. Scholarships will be awarded to outstanding students—based on criteria centred around academic excellence, cultural background, and community involvement, leadership, and equity. The package includes full accommodation costs in your first year, plus a stipend for three years.

Applications open in June and are due by **2 September**.

**i** [www.wgtn.ac.nz/scholarships](http://www.wgtn.ac.nz/scholarships)



# ACCOMMODATION

University Accommodation Wellington can help you find accommodation. International students can apply to stay in University halls of residence (catered or self-catered) or arrange private off-campus accommodation. The University has a range of accommodation options to suit your style of living.

We recommend you apply for University accommodation as early as possible. Apply by **1 October** to secure a place in one of your preferred options. Apply by **1 December** to be guaranteed an offer of accommodation.

## HALLS OF RESIDENCE

The University’s halls of residence are like apartment buildings—they house many students, mostly in single or some double rooms. Living in a hall of residence means you will be part of a safe and supportive community of students who come from different backgrounds with varying interests.

The University has 15 halls, located in different parts of the city. Most are within easy walking distance of our three campuses.

## CATERED HALLS

You will be provided with meals throughout the week and will be surrounded by other students who are new to Victoria University of Wellington.

## SELF-CATERED HALLS

You will need to cook or buy your own meals. Self-catered halls are filled with senior students and can be more like private accommodation.

## ACCOMMODATION PRICE GUIDE\*

	Weekly fee (NZD)	Yearly fee (NZD)
Catered halls of residence	\$325–\$527	\$9,880–\$18,978
Self-catered halls of residence	\$234–\$440	\$7,220–\$13,490

\*Fees are subject to change and may vary for 2022

## HOMESTAY

A homestay means you live with a local family—and it is great for practising your English. Most homestays are not within walking distance of the University, so you may have to travel to get there.

You will get your own fully-furnished bedroom and most of your meals are provided (you just have to buy your own lunch during the week).

Host Families New Zealand facilitate homestay accommodation for the University.

## PRIVATE ACCOMMODATION

Also known as ‘flattening’ in New Zealand—this could be in an apartment, townhouse, or a house. Finding private accommodation in Wellington can take some time and may be more difficult near the start of the year when many other students are also looking. Depending on your budget, you may end up living some distance away from the University. For these reasons, it may be best to consider other accommodation options first.

If you are under the age of 18 years when you begin your studies, you are required to live in a homestay or catered hall of residence.

## LIVING COSTS

The amount you will spend on living costs depends a lot on your needs and habits. There is a range of lifestyles. The following amounts are in New Zealand dollars and based on 40 weeks (two trimesters) in Wellington:

- Essential living costs (keeping it basic but comfortable): \$18,000
- Generous living costs (allowing for weekend trips and enjoying the night life): \$27,000

For more information about accommodation and how to apply, go to

**i** [www.wgtn.ac.nz/international-accommodation](http://www.wgtn.ac.nz/international-accommodation)

Take a closer look at what some of our halls of residence offer. To explore all of our halls of residence, go to

[www.wgtn.ac.nz/accommodation](http://www.wgtn.ac.nz/accommodation)



### VICTORIA HOUSE

Established in 1907. Multi-storey buildings with an outdoor grassed courtyard and surrounding gardens

- Single or twin-share rooms
- From NZ\$325 per week
- 5–20 minutes walk to each campus

### TE PUNI VILLAGE

A multi-level complex on Kelburn campus with stunning views from its communal areas

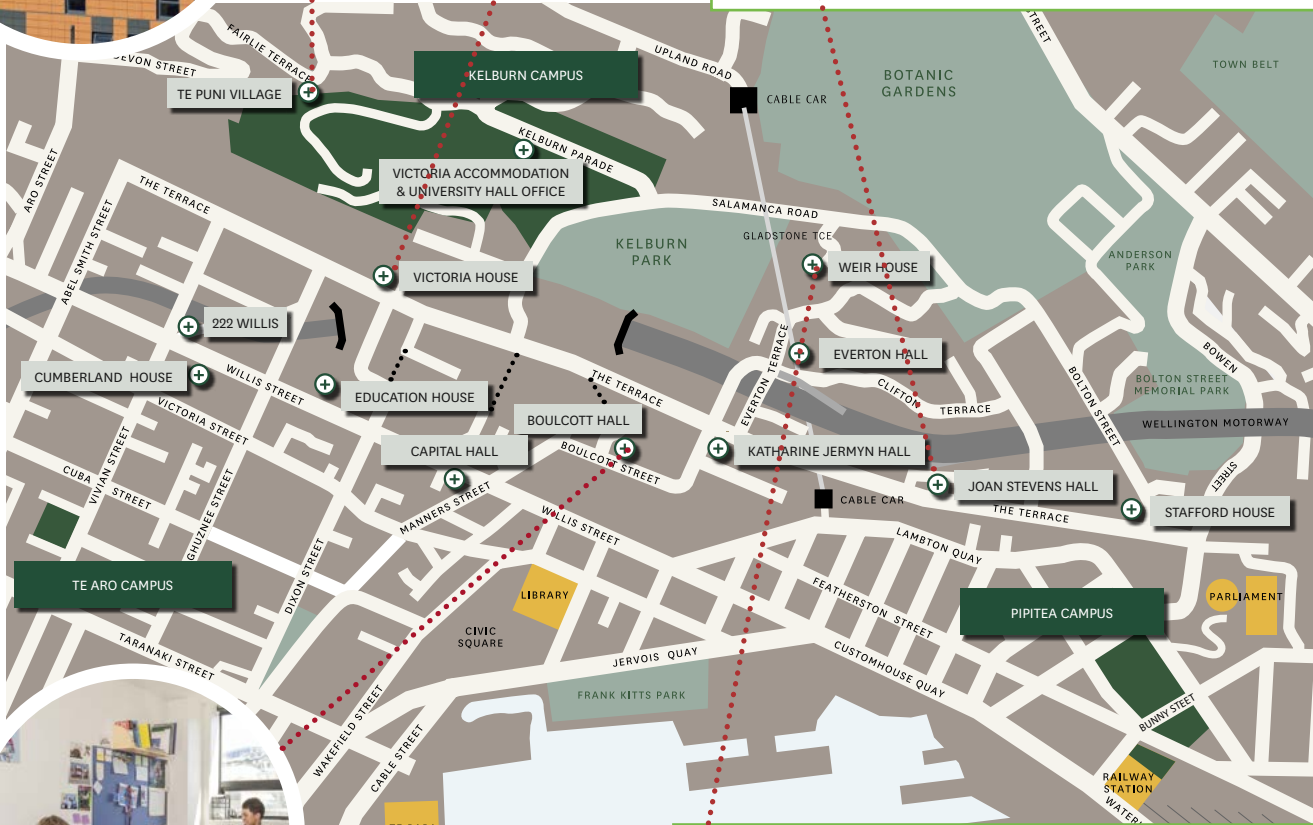
- Single, apartment single or single studio
- From NZ\$496 per week
- 2–25 minutes walk to each campus



### JOAN STEVENS HALL

A high-rise building housing 242 students in the central city with fully furnished and heated rooms

- Single rooms
- From NZ\$434 per week
- 10–15 minutes walk to each campus



### BOULCOTT HALL

A high-rise building close to the heart of the city with an engaged student community

- Single rooms
- From NZ\$434 per week
- 10–15 minutes walk to each campus



### WEIR HOUSE

The historic Weir House, opened in 1933, provides a vibrant community with a strong academic focus

- Single, set or twin-share rooms
- From NZ\$330 per week
- 5–20 minutes walk to each campus

- KEY:**
- Catered: meals will be provided
  - Exercise or games area
  - Music room
  - Disabled access
  - Free wireless internet. Heavy internet use may cost extra in some halls
  - Weekly fee, including most utilities. Fees are subject to change and may vary for 2022
  - Walking distance to all three city campuses



# HOW OUR DEGREES WORK

Some of our degrees are flexible—allowing you to mix and match different subjects to form one degree and even giving you the chance to choose majors from other degrees.

Some degrees are quite specialised and focus on one particular area of study. Most of your first-year courses in these degrees are already set, which leaves a small amount of space for elective courses.

## DEGREES

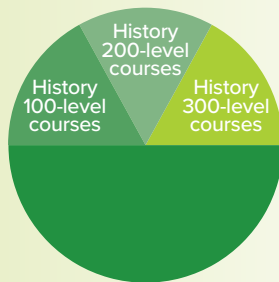


A degree is a qualification awarded when you complete a programme of university study. Your first university degree is called an undergraduate or Bachelor's degree. Each degree has its own set of requirements that you need to complete in order to graduate.

A typical degree requires 360 points and three years of full-time study. You'll normally take around 120 points (six to eight courses of 15 or 20 points each) per year. Some degrees take four years.

## MAJORS

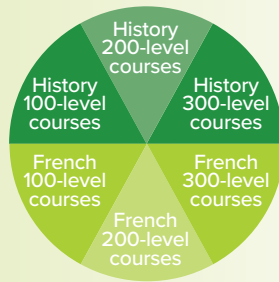
120–150 points



Majors are the subject(s) you focus on throughout your degree. For example, you can take a Bachelor of Arts with a major in History. You will take courses in your major subject through to your final year. Your major will normally make up about a third of the courses in your degree.

## DOUBLE MAJORS

240–300 points



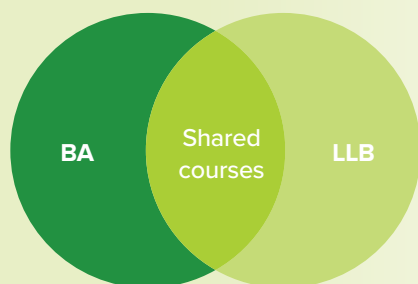
A double major allows you to focus on two subjects within one degree—for example, a Bachelor of Arts with a double major in History and French. This requires the same number of points as a degree with only one major, and should not take any extra time.

Some of our degrees also let you take a second major from another degree.

## MINORS

In some of our degrees, you can take a minor, which is similar to a major but with fewer courses. You can include a minor in the Bachelor of Arts, Bachelor of Commerce, Bachelor of Design Innovation, and Bachelor of Science.

## CONJOINT PROGRAMMES



A conjoint degree programme is a specialised programme which, due to cross-crediting, allows two degrees to be completed in a shorter amount of time than it would take to complete them consecutively. For example, a conjoint Bachelor of Arts and Bachelor of Laws would take five years to complete, rather than seven years.

For all conjoint degree programmes, a B– grade average (or better) is required to continue in the conjoint programme each year.

## ELECTIVES

If you still have room in your programme, you can include courses from other subjects in which you are interested (often called electives).

## CHOOSING YOUR COURSES

You can use the *Guide to Undergraduate Study* on our website to plan your first year of study and choose your courses.

[www.wgtn.ac.nz/explore](http://www.wgtn.ac.nz/explore)

# PLANNING SCHOOL SUBJECTS

All of our degrees have recommended school subjects, however, in nearly all cases, there are introductory or bridging courses offered at the University for those with limited background in a subject area.

You can still enrol in a specific degree/major/course if you have not studied a related subject at school, but for some subjects (such as Mathematics, Chemistry, and Physics), it is useful if you have studied these at school. It is also very important that you take four or five University Entrance approved subjects.

For tips on planning school subjects and a list of recommended school subjects for each of the degrees we offer, go to

[www.wgtn.ac.nz/study/course-planning](http://www.wgtn.ac.nz/study/course-planning)

To explore your study options at the University, go to

[www.wgtn.ac.nz/international/programmes/undergraduate](http://www.wgtn.ac.nz/international/programmes/undergraduate)

## TEACHER EDUCATION

If you plan to become an early childhood teacher, you can apply to study the Bachelor of Education (Teaching) Early Childhood. Once you complete your degree, you'll be eligible for provisional teacher registration.

If you plan to become a primary or secondary school teacher, you should first study a degree in the subject area you are interested in teaching. Once you have completed your degree, you can study a one-year teaching qualification, such as the Graduate Diploma (Primary or Secondary), to become a registered teacher.

**Find out what you need to do to gain University Entrance on page 16**

**We recommend taking four or five approved subjects for University Entrance in Year 13**



# UNDERGRADUATE DEGREES

## WELLINGTON FACULTY OF ARCHITECTURE AND DESIGN INNOVATION

### Bachelor of Architectural Studies in:

- Architecture
- Architecture History and Theory
- Interior Architecture
- Landscape Architecture

### Bachelor of Building Science in:

- Project Management
- Sustainable Engineering Systems

### Bachelor of Design Innovation in:

- Animation and Visual Effects
- Communication Design
- Design for Social Innovation
- Fashion Design Technology
- Industrial Design
- Interaction Design
- Media Design

## WELLINGTON FACULTY OF BUSINESS AND GOVERNMENT

### Bachelor of Commerce in:

- Accounting
- Actuarial Science
- Commercial Law
- Data Science
- Econometrics\*
- Economics
- Finance
- Human Resource Management and Employment Relations
- Information Systems
- Innovation and Entrepreneurship Studies\*
- International Business
- Management
- Marketing
- Public Policy
- Taxation
- Tourism Management

## WELLINGTON FACULTY OF EDUCATION

### Bachelor of Education (Teaching) Early Childhood

## WELLINGTON FACULTY OF ENGINEERING

### Bachelor of Engineering (Hons) in:

- Cybersecurity Engineering
- Electrical and Electronic Engineering
  - Communication Engineering\*
  - Machine Learning\*
  - Renewable Energy Systems\*
  - Robotics\*
- Software Engineering
  - Artificial Intelligence\*
  - Networked Applications\*

### Bachelor of Science in:

- Computer Graphics
- Computer Science
  - Artificial Intelligence\*
  - Cybersecurity\*
- Electronic and Computer Systems
- Renewable Energy Systems

## WELLINGTON FACULTY OF HEALTH

### Bachelor of Health in:

- Health Informatics
- Health Promotion
- Health Psychology
- Population Health, Policy, and Service Delivery

### Bachelor of Midwifery

## WELLINGTON FACULTY OF HUMANITIES AND SOCIAL SCIENCES

### Bachelor of Arts in:

- Art History
- Asian Studies
- Chinese
- Classical Studies
- Creative Writing\*
- Criminology
- Cultural Anthropology
- Data Science
- Development Studies
- Economics
- Education
- Education and Psychology
- English Literature

- Film
- French
- Geography
- Gender and Sexuality Studies\*
- German
- Greek
- History
- International Relations
- Italian
- Japanese
- Latin
- Linguistics
- Māori Resource Management
- Māori Studies
- Mathematics
- Media Studies
- Modern Language Studies
- Music
- New Zealand Sign Language\*
- Pacific Studies
- Philosophy
- Political Science
- Psychology
- Public Policy
- Religious Studies
- Samoan Studies / Mata'upu tau Sāmoa
- Social Policy\*
- Sociology
- Spanish
- Teaching English to Speakers of Other Languages (TESOL)
- Te Reo Māori
- Text Technologies\*
- Theatre

### Bachelor of Communication in:

- Intercultural Communication
- Literary and Creative Communication
- Media Studies
- Political Communication
- Science Communication

### Bachelor of Music in:

- Classical Performance
- Composition\*
- Instrumental / Vocal Composition

- Jazz Performance
- Music Studies
- Music Technology\*
- Performance\*
- Popular Music Studies\*
- Sonic Arts and Music Technology

## FACULTY OF LAW

### Bachelor of Laws

## WELLINGTON FACULTY OF SCIENCE

### Bachelor of Biomedical Science in:

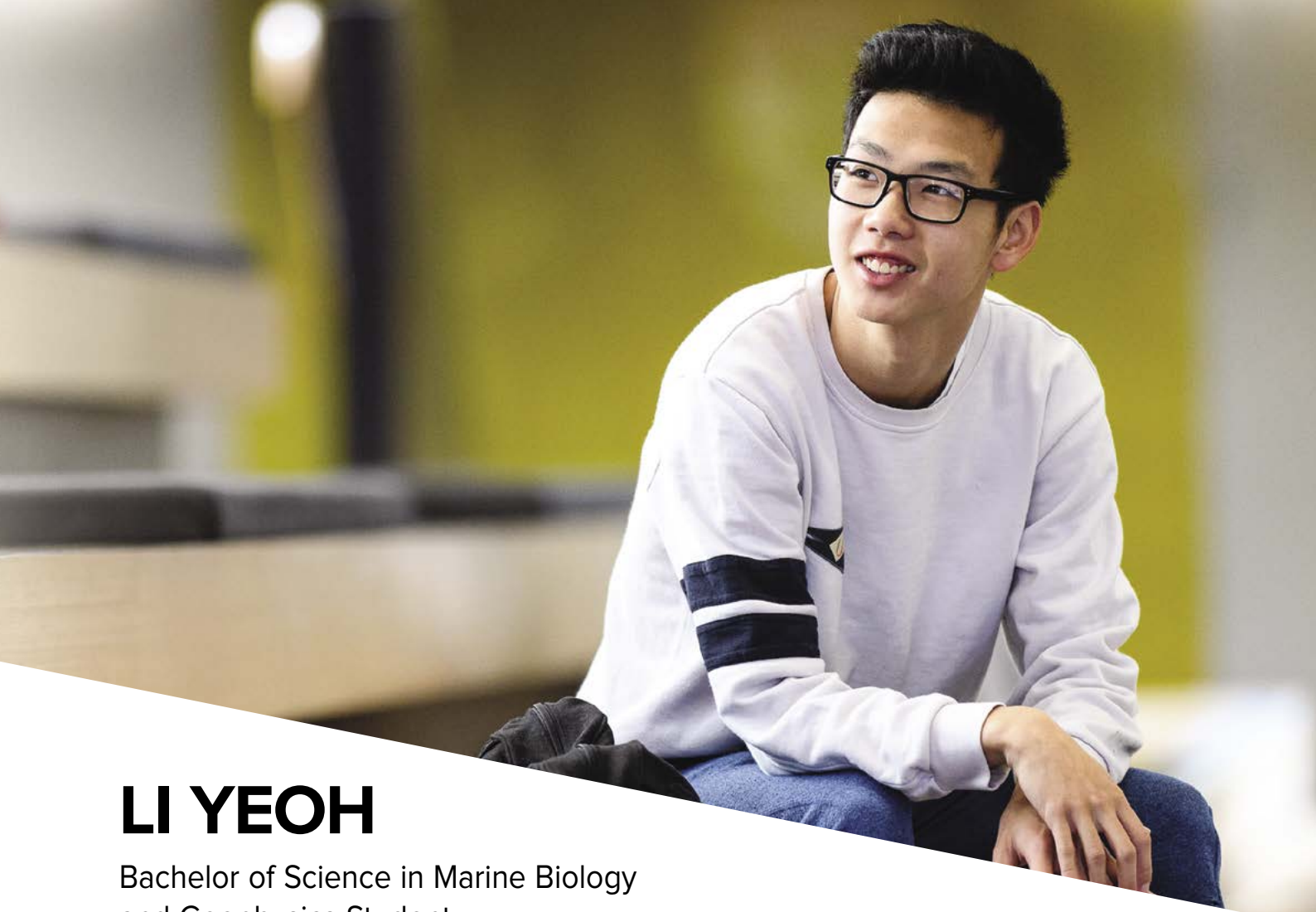
- Human Genetics
- Molecular Pathology
- Molecular Pharmacology and Medicinal Chemistry

### Bachelor of Science in:

- Actuarial Science
- Applied Physics
- Biology
- Biotechnology
- Cell and Molecular Bioscience
- Chemistry
- Data Science
- Development Studies
- Ecology and Biodiversity
- Environmental Science
- Environmental Studies
- Geography
- Geology
- Geophysics
- Marine Biology
- Mathematics
- Physical Geography
- Physics
- Psychology
- Science in Society\*
- Statistics

\*Minors or specialisations (not majors)

Rank and guaranteed entry scores do not apply to international students



# LI YEOH

Bachelor of Science in Marine Biology  
and Geophysics Student

## INTERNATIONAL RECOGNITION

Discovering the international reputation of Victoria University of Wellington helped Li make his decision about where to study.

“I chose Victoria University of Wellington after talking with people who had done Marine Biology and getting the feel of what it was like. I spoke to a student who had come all the way from Germany to study here, after hearing about the University’s Marine Ecology programme. I thought, if you’re coming all the way from Germany—why wouldn’t I stay in Wellington and study here?”

## A WORLD-CLASS EXPERIENCE

Li has made the most of his access to the University’s world-class academics, and has learned everything he can in his time here.

“I think that the lecturers, who teach such specialised subjects, really love it and they teach because they want to. If you ask a question, they talk to you because they like that you’re showing interest and they want to share what they know. You start to appreciate just how well versed they are in their field.”

## COMBINING STUDY WITH SPORT

The range of clubs at Victoria University of Wellington provides a chance to try new things, and joining one of these clubs has taken Li around the world.

“A friend played ultimate frisbee in one of the Wellington leagues, so I got involved through him. And when I came to the University, I joined the team here. We went to the University Games, and the captain for the New Zealand under-19 team saw me play and suggested I try out. I made the team and now I get to travel the world to play.”

## TYPICAL DAY

“My lecture times vary between mornings and afternoons, and I often have labs in the afternoon so my start time is always different. I have friends who live close to the Kelburn campus, so I’ll pop round if I have a break for lunch, or just hang out in the Library, which is a great space to do some study. On a nice day, I’ll organise to meet with some friends and throw a frisbee around on Boyd-Wilson field.”

Hear from our students about their experience at Victoria University of Wellington

 [www.wgtn.ac.nz/why-choose-us](http://www.wgtn.ac.nz/why-choose-us)

# INTERNATIONAL STUDENT ADMISSION

All international students apply for admission and first-year enrolment through Wellington University International.



## UNIVERSITY ENTRANCE

If you are an international student at a secondary school in New Zealand studying for the National Certificate of Achievement (NCEA), Cambridge International Examinations (CIE), or the International Baccalaureate Diploma (IB), you will be automatically accepted into any degree when you achieve University Entrance (UE). Check the minimum requirements listed below to see what you need to gain University Entrance admission. The Guaranteed Entry Scores (GES) for NCEA, CIE, and IB do not apply to international students.

## IF YOU DO NOT GAIN ADMISSION

If you do not meet the minimum requirements, you may consider either staying on at school to achieve your qualification or enrolling in the Victoria University of Wellington Foundation Studies Programme, taught by UP Education. Successful completion of this programme also meets the minimum academic requirements for admission to Victoria University of Wellington.

## ENGLISH REQUIREMENTS

**If you gain University Entrance and have studied at a New Zealand secondary school for at least one year, you meet the University's English language requirements. You do not need to provide any further proof of English proficiency.**

If you plan on studying an Education degree, you will need to have studied at a New Zealand secondary school for at least two years or achieve IELTS overall band of 7.0 with no subscore below 7.0.

If you plan on studying a Midwifery degree, you need to achieve an IELTS overall band of 7.0, with 6.5 or higher in reading and writing, and 7.0 in listening and speaking.

## STUDENT APPLYING WITH NCEA

University Entrance:

You will need to achieve University Entrance through the National Certificate of Educational Achievement (NCEA).

Attain NCEA Level 3:

AN NCEA LEVEL 3 CERTIFICATE		
14 credits at Level 3 in an approved subject	14 credits at Level 3 in an approved subject	14 credits at Level 3 in an approved subject
<b>LITERACY</b> 10* credits at Level 2 or above (5 in reading, 5 in writing)	<b>NUMERACY</b> 10* credits at Level 1 or above	

\*For specialised lists of standards, go to

[www.nzqa.govt.nz](http://www.nzqa.govt.nz)

University Entrance Literacy: At least 10 credits at Level 2 or higher; 5 credits must be in reading and 5 in writing from specific standards.

**The Guaranteed Entry Scores (GES) do not apply to international students.** You only need to achieve the above in order to meet the minimum requirements for admission.

[www.nzqa.govt.nz/qualifications-standards/awards/university-entrance/approved-subjects](http://www.nzqa.govt.nz/qualifications-standards/awards/university-entrance/approved-subjects)

**Gaining UE meets the University's English requirements**

## NCEA approved subjects for entrance to university

- Accounting
- Agriculture and Horticulture
- Biology
- Business Studies
- Calculus
- Chemistry
- Chinese
- Classical Studies
- Construction and Mechanical Technologies
- Cook Islands Māori
- Dance
- Design (Practical Art)
- Design and Visual Communication
- Digital Technologies
- Drama
- Earth and Space Science
- Economics
- Education for Sustainability
- English
- French
- Geography
- German
- Health Education
- History
- History of Art
- Home Economics
- Indonesian
- Japanese
- Korean
- Latin
- Mathematics / Pāngarau
- Media Studies
- New Zealand Sign Language
- Painting (Practical Art)
- Photography (Practical Art)
- Physical Education
- Physics
- Printmaking (Practical Art)
- Processing Technologies
- Psychology
- Religious Studies
- Samoan
- Science / Pūtaiao
- Sculpture (Practical Art)
- Social Studies
- Spanish
- Statistics
- Technology
- Te Reo Māori
- Te Reo Rangatira
- Tongan

## UNIVERSITY ENTRANCE STUDENTS APPLYING WITH CIE

### University Entrance:

You will need to achieve University Entrance through the Cambridge International Examinations (CIE):

- Attain a minimum of 120 points on the UCAS Tariff at A or AS level from any syllabus groups, which are broadly equivalent to those in the list of approved subjects for NCEA
- D grade or better in syllabuses from at least three different syllabus groups (excluding Thinking Skills)
- E grade or better in any one of AS-level English Language, Language and Literature in English, or Literature in English
- D grade or better in IGCSE or GCSE Mathematics.

The Guaranteed Entry Scores (GES) do not apply to international students.

**Credits you gain in Years 11 and 12 will count towards numeracy and literacy requirements**

## UNIVERSITY ENTRANCE STUDENTS APPLYING WITH IB

### University Entrance:

You will need to achieve University Entrance through the International Baccalaureate Diploma (IB):

- Attain the full IB Diploma (you need to achieve a minimum of 24 points)
- Achieve a grade of 3 or higher in IB English.

The Guaranteed Entry Scores (GES) do not apply to international students.

## FOUNDATION STUDIES PROGRAMME



If you do not meet the minimum requirements, you may consider enrolling in the Victoria University of Wellington Foundation Studies Programme.

The Victoria University of Wellington Foundation Studies Programme is taught exclusively by UP International College New Zealand and offers successful students guaranteed entry to Victoria University of Wellington's undergraduate programmes.

The programme offers flexibility with four intakes per year and 6-, 8/9-, 12-, and 18-month course options (two, three, four, or six terms), depending on your academic background and level of English. The curriculum develops subject knowledge and skills as well as entrepreneurial enterprise, leadership, and team skills to equip you for university.

When you apply for the Victoria University of Wellington Foundation Studies Programme, you will receive two offers of place at the time of application: a letter of offer for the foundation programme and a conditional letter of offer for an undergraduate degree at Victoria University of Wellington. An unconditional offer of place will be issued as soon as you have successfully completed the Foundation Studies Programme and met admission requirements.

To apply for this programme through UP Education, go to

**i** <http://partnerships.up.education/wellington>



## APPLICATION DEADLINES

You can submit your application at any time when you are in your final year of secondary school study. You can apply before your exam results are available.

Apply by **1 December**. Applications received after this date will be assessed on a case-by-case basis.

You need to submit your application to Wellington University International before you will be able to enrol online for courses. Online enrolment is open between **1 October** and the **beginning of February**. For limited entry programmes and courses, online enrolment closes **10 December**.

### Early application deadlines

We recommend students studying these programmes apply **at least three months before** the application deadline.

- The Bachelor of Education (Teaching) Early Childhood and the Bachelor of Midwifery also have extra application requirements.
- Classical Performance and Jazz Performance students must audition. Both programmes also have an early application deadline. Check audition application dates on the New Zealand School of Music Te Kōkī website.

📍 [www.wgtn.ac.nz/nzsm](http://www.wgtn.ac.nz/nzsm)

## VISA INFORMATION

All international students must have a valid student visa to enrol at Victoria University of Wellington. You cannot enrol with a secondary school visa.

A valid visa must:

- state the name of the programme you will be enrolling in (e.g. Bachelor of Commerce)
- state the name of the institution you will be enrolling at (e.g. Victoria University of Wellington).

You can apply for a student visa through Wellington University International if you:

- submit your visa application in person in Wellington
- hold a valid New Zealand student visa.

You need an unconditional Offer of Place to study at Victoria University of Wellington to apply for your student visa. You will receive this when your NCEA, CIE, or IB results have been verified by Wellington University International in January.

We recommend that you pay your tuition fees as soon as you receive your Offer of Place. You need evidence that you have paid your fees (or have funding for them, like a scholarship or student loan) to get your student visa. When you have paid your fees, we will send you a Summary of Deposit to use as proof of payment for your visa application.



# HOW DO I APPLY?

International students must submit an application to Wellington University International. The International Admissions team assesses all international student applications.



To submit an application, follow these steps:

## STEP 1

Complete an international student application

Click on 'How to Apply' on our website for instructions on how to apply as an international New Zealand secondary school student.

## STEP 2

Receive a conditional Offer of Place and an invitation to enrol online

You will have a conditional Offer of Place until your NCEA, IB, or CIE results have been released. With a conditional Offer of Place, you are able to enrol online into courses you want to study, apply for accommodation, pay your tuition fees, and prepare all the documents for your new visa. See the Visa section opposite for more information.

## STEP 3

Receive an unconditional Offer of Place

After your results are released in January, and the International Admissions team has checked you have met the entry requirements, you will receive an unconditional Offer of Place.

If you have applied for admission with NCEA, you do not need to send your results to our team—we will verify your results online when they are released in January.

If you have applied for admission with CIE, you need to send your Cambridge Centre and candidate numbers to our team—we will then verify your results online when they are released in January.

If you have applied for admission with IB, you need to submit your results to us electronically. **Our institution code is: 001649.** Request your IB results to be released to us at

[www.ibo.org/en/programmes/diploma-programme/assessment-and-exams/requesting-transcripts](http://www.ibo.org/en/programmes/diploma-programme/assessment-and-exams/requesting-transcripts)

## STEP 4

Accept your Offer of Place

You can do this online at

[www.wgtn.ac.nz/international-offer](http://www.wgtn.ac.nz/international-offer)

## STEP 5

Prepare for study at Victoria University of Wellington

Once you have received your unconditional Offer of Place, you should have already prepared all your visa application materials. Now you will need to apply for your visa. See the Visa section opposite for more information.

Check your inbox regularly for more information from Wellington University International about preparing for your study.





VICTORIA UNIVERSITY OF  
**WELLINGTON**  
TE HERENGA WAKA

## CONNECT WITH US

### VISIT US

If you're an international student wanting to visit the University, get in touch with Wellington University International to organise your visit.

### INFORMATION EVENTS

Our events offer you the chance to talk to staff and students. We hold events throughout New Zealand's main cities. Attend an information evening or open day. You can also join us at an online session.

[www.wgtn.ac.nz/study/events-visits](http://www.wgtn.ac.nz/study/events-visits)

### INTERNATIONAL STUDENT INFORMATION SESSIONS (ONLINE)

Join us for an information session specifically for international students. Find out more about studying here at Victoria University of Wellington from our international team and students.

[www.wgtn.ac.nz/international-info-sessions](http://www.wgtn.ac.nz/international-info-sessions)

### CONTACT US

+64 4 463 5350

[international@vuw.ac.nz](mailto:international@vuw.ac.nz)

[www.wgtn.ac.nz/international](http://www.wgtn.ac.nz/international)

[www.wgtn.ac.nz/international-secondary-students-nz](http://www.wgtn.ac.nz/international-secondary-students-nz)

### FOLLOW US ON SOCIAL MEDIA

[www.wgtn.ac.nz/facebook-international](http://www.wgtn.ac.nz/facebook-international)

[www.wgtn.ac.nz/twitter](http://www.wgtn.ac.nz/twitter)

[www.wgtn.ac.nz/instagram](http://www.wgtn.ac.nz/instagram)

[www.wgtn.ac.nz/linkedin](http://www.wgtn.ac.nz/linkedin)

[www.wgtn.ac.nz/youtube](http://www.wgtn.ac.nz/youtube)

### CODE OF PRACTICE

Victoria University of Wellington is a signatory to the Education (Pastoral Care of International Students) Code of Practice 2016 (The Code). Published by the New Zealand Ministry of Education and administered by the New Zealand Qualifications Authority (NZQA), the Code is designed to ensure international students are well-informed, safe, and properly cared for. You can read about the Code and the University's obligations to you at [www.nzqa.govt.nz/the-code](http://www.nzqa.govt.nz/the-code)