



VICTORIA UNIVERSITY OF
WELLINGTON
TE HERENGA WAKA

YOUR INTRO

2026

“No matter what it is you’re hoping to get out of your university experience, there are countless people at VUW wanting to help make that happen.”

Sophie Guerin

Student, Bachelor of Arts and Bachelor of Laws



Apply now



HERE TO HELP

Our Future Students team offers expert advice on coming to Te Herenga Waka—Victoria University of Wellington, choosing your subjects, and planning your degree. Look out for us at your school or contact us with any questions you have about planning your study.

WELLINGTON OFFICE

Level 1, Hunter Building
Kelburn Campus, Wellington

☎ 0800 04 04 04

✉ future-students@vuw.ac.nz

AUCKLAND OFFICE

Level 4, 50 Kitchener Street,
Auckland Central

☎ 09 300 2080 or

☎ 0800 04 04 04

📄 wgtn.ac.nz/course-planning

THE PASTORAL CARE CODE: The Government's Pastoral Care Code sets out the University's roles and responsibilities in ensuring the safety and wellbeing of all our students. This includes fostering learning environments that are safe and designed to support positive learning experiences of diverse learner groups. During your time here, you have access to a range of services and support to promote your overall wellbeing, development, and educational achievement. Read more about the code and our obligations.

📄 wgtn.ac.nz/support

IMPORTANT NOTICE: Te Herenga Waka—Victoria University of Wellington uses all reasonable skill and care to ensure the information contained here was accurate at the time it was prepared. However, matters covered by this publication are subject to change due to a continuous process of review, and to unanticipated circumstances. The University therefore reserves the right to make any changes without notice. So far as the law permits, the University accepts no responsibility for any loss suffered by any person due to reliance (either whole or in part) on the information contained in this publication, whether direct or indirect, and whether foreseeable or not.



CONTENTS

PREPARE FOR STUDY

Explore areas of study	4
Welcome to Wellington	10
Get ready for study	12
Life on campus	14
Leadership and studying overseas	19
Māori students	20
Pasifika students	24
International students	26
Information for whānau	28
What university study will cost	30
Scholarships	32
Accommodation	34
Planning ahead	36
Admission	38



Te Herenga Waka—Victoria University of Wellington has an overall five-stars-plus rating in the QS Stars university rating system, one of only 23 universities worldwide to do so. The University gained a total score of 966 out of a possible 1,000 points across eight audited categories, including maximum

points for the employability and inclusiveness categories. Maximum points were awarded for 25 of the more than 30 indicators, including overall student satisfaction; further study; graduate employment rate; international diversity, support, and collaborations; academic reputation; satisfaction with teaching; campus facilities; accreditations; art and cultural investment and facilities; disabled access; scholarships and bursaries; low-income outreach; and student cohort diversity.

OUR DEGREES

Planning your first year	42
Architectural Studies	44
Arts	46
Biomedical Science	48
Building Science	49
Commerce	50
Communication	51
Design Innovation	52
Education and Teaching	54
Engineering	56
Environment and Society	58
Global Studies	60
Health	61
Law	62
Midwifery	64
Music	66
Popular Music	68
Psychology	70
Science	72

GENERAL INFORMATION

Events	74
Information evenings	75
Connect with us	76
The University's campuses and halls	<i>Inside back cover</i>

EXPLORE AREAS OF STUDY



Architectural model by Haoyu Ye for ARCI 212
Architecture Design Integration I /
Te Whakakotahitanga o ngā Tikanga Wakarākei Whare I.



ARCHITECTURE AND BUILDING SCIENCE

- ▶ Architecture (see page 44)
- ▶ Architecture History and Theory (see page 45)
- ▶ Environmental Design (see page 44)
- ▶ Interior Architecture (see page 45)
- ▶ Landscape Architecture (see page 45)
- ▶ Project Management (see page 49)
- ▶ Sustainable Engineering Systems (see page 49)

ARTS AND EXPRESSION

- ▶ Art History (see page 47)
- ▶ Creative Writing (see pages 47 and 51)
- ▶ English Literature (see page 47)
- ▶ Film (see page 47)
- ▶ Literary and Creative Communication (see page 51)
- ▶ Music (see pages 47 and 66)
- ▶ Theatre (see page 47)



BUSINESS

- ▶ Accounting (see page 50)
- ▶ Actuarial Science (see pages 50, 57, and 73)
- ▶ Banking (see page 50)
- ▶ Commercial Law (see page 50)
- ▶ Data Science (see pages 47, 50, and 73)
- ▶ Economics, Econometrics, and Finance (see page 50)
- ▶ Ethical Leadership and Intercultural Communication (see page 60)
- ▶ Health Informatics (see page 61)
- ▶ Human Resource Management and Employment Relations (see page 50)
- ▶ Information Systems (see pages 50 and 73)
- ▶ International Business (see page 50)
- ▶ Kaitiakitanga (see page 47)
- ▶ Management (see page 50)
- ▶ Marketing (see page 50)
- ▶ Marketing Communication (see page 51)
- ▶ Public Policy (see pages 47 and 50)
- ▶ Sustainability and Ethics in Business (see page 50)
- ▶ Taxation (see page 50)
- ▶ Tourism Management (see page 50)
- ▶ Work and Organisational Psychology (see page 71)
- ▶ World Affairs and Organisations (see page 60)



CLIMATE AND ENVIRONMENT

- ▶ Biotechnology (see page 73)
- ▶ Climate Science (see pages 58 and 73)
- ▶ Cultural Anthropology (see pages 47 and 58)
- ▶ Design for Social Innovation (see page 53)
- ▶ Development Studies (see pages 47, 58, and 73)
- ▶ Earth Science (see pages 58 and 73)
- ▶ Ecology and Biodiversity (see page 73)
- ▶ Education for the Environment (see page 58)
- ▶ Environment and Sustainability, Environmental Science, Environmental Studies (see pages 58, 60, and 73)
- ▶ Environmental Design (see page 58)
- ▶ Environmental Humanities (see page 58)
- ▶ Geography (see pages 47, 58, and 73)
- ▶ Globalisation, Movement, and Change (see page 60)
- ▶ Kaitiakitanga (see page 47)
- ▶ Marine Biology (see page 73)
- ▶ Sustainability and Ethics in Business (see page 50)
- ▶ Sustainable Engineering Systems (see page 49)

COMMUNICATION

- ▶ Communication Design (see page 53)
- ▶ Ethical Leadership and Intercultural Communication (see page 60)
- ▶ Intercultural Communication (see page 51)
- ▶ Language Sciences (see pages 47 and 51)



Pull Dry by Joshua Unwin for INDN 241 Sustainable Mediums / Ngā Huarahi Toitūtanga.

- ▶ Literary and Creative Communication (see page 51)
- ▶ Marketing Communication (see page 51)
- ▶ Media Studies (see pages 47 and 51)
- ▶ Political Communication (see page 51)
- ▶ Science Communication (see pages 51 and 73)

DESIGN

- ▶ Animation and Visual Effects (see page 53)
- ▶ Communication Design (see page 53)
- ▶ Design for Social Innovation (see pages 53 and 58)
- ▶ Environmental Design (see page 58)
- ▶ Fashion Design Technology (see page 53)
- ▶ Game Design (see page 53)
- ▶ Industrial Design (see page 53)
- ▶ Interaction Design (see page 53)
- ▶ Media Design (see page 53)

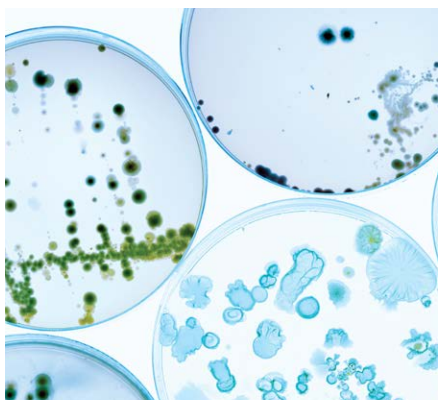


EDUCATION AND TEACHING

- ▶ Early Childhood Teaching (see page 54)
- ▶ Education (see page 54)
- ▶ Education for the Environment (see page 58)
- ▶ Educational Psychology (see pages 47, 55, and 71)
- ▶ Languages Sciences (see pages 47 and 51)
- ▶ Primary and Secondary Teaching (see page 55)

ENGINEERING AND DIGITAL TECHNOLOGIES

- ▶ Animation and Visual Effects (see page 53)
- ▶ Artificial Intelligence (see pages 57 and 73)
- ▶ Biotechnology (see page 73)
- ▶ Building Science (see page 49)
- ▶ Cognitive Science (see page 71)
- ▶ Computer Science (see pages 57 and 73)
- ▶ Cybersecurity Engineering (see page 57)
- ▶ Electrical and Electronic Engineering (see page 57)
- ▶ Electronic and Computer Systems (see page 57)
- ▶ Game Design (see page 53)
- ▶ Software Engineering (see page 57)



HEALTH

- ▶ Biomedical Sciences: Human Genetics; Molecular Pathology; Molecular Pharmacology and Medicinal Chemistry (see page 48)
- ▶ Biotechnology (see page 73)
- ▶ Brain Sciences and Mental Health (see page 71)
- ▶ Cell and Molecular Bioscience (see page 73)
- ▶ Global Health and Wellbeing (see page 60)
- ▶ Health Informatics (see page 61)
- ▶ Health Policy and Innovation (see page 61)
- ▶ Health Promotion (see page 61)
- ▶ Health Psychology (see pages 61 and 71)
- ▶ Mental Health: Principles and Applications (see page 71)
- ▶ Midwifery (see page 64)
- ▶ Physical Activity and Hauora (see page 61)
- ▶ Psychological Science (see pages 47, 71, and 73)

HISTORY AND PHILOSOPHY

- ▶ Area and Cultural Studies (see page 60)
- ▶ Art History (see page 47)
- ▶ Classical Studies (see page 47)
- ▶ Cultures and Identities (see page 60)
- ▶ History (see page 47)
- ▶ Philosophy (see page 47)



LANGUAGES AND CULTURES

- ▶ Academic and Professional Writing (see page 47)
- ▶ Culture Studies: Area and Cultural Studies (see page 60); Asian Studies (see pages 47), Classical Studies (see page 47); Cultural Anthropology (see pages 47 and 58); Cultures and Identities (see page 60); Māori Studies (see page 47); Pacific Studies (see page 47)
- ▶ Development Studies (see pages 47, 58, and 73)
- ▶ English Literature (see page 47)
- ▶ Ethical Leadership and Intercultural Communication (see page 60)
- ▶ Globalisation, Movement, and Change (see page 60)
- ▶ Intercultural Communication (see page 51)
- ▶ Kaitiakitanga (see page 47)
- ▶ Language Studies: Chinese; French; German; Greek; Japanese; Latin; New Zealand Sign Language; Sāmoan Studies; Spanish; Te Reo Māori (see pages 47 and 51)
- ▶ Language Sciences (see pages 47 and 51)
- ▶ Māori Psychology (see page 71)
- ▶ Modern Language Studies (see page 47)



LAW, POLITICS, AND GOVERNMENT

- ▶ Commercial Law (see page 63)
- ▶ Criminal Justice and Psychology (see page 71)
- ▶ Health Policy and Innovation (see page 61)
- ▶ Human Rights, Justice, and Peace (see page 60)
- ▶ International Relations (see page 47)
- ▶ Law (see page 62)
- ▶ Political Science (see page 47)
- ▶ Public Policy (see pages 47 and 50)

MATHEMATICS AND STATISTICS

- ▶ Actuarial Science (see pages 50, 57, and 73)
- ▶ Data Science (see pages 47, 50, and 73)
- ▶ Econometrics (see page 50)
- ▶ Mathematics (see pages 47, 57, and 73)
- ▶ Statistics (see pages 57 and 73)



MUSIC

- ▶ Audio Production and Recording (see page 68)
- ▶ Classical/Jazz Performance (see page 67)
- ▶ Digital Music and Audio Production (see page 67)
- ▶ Electronic Music (see page 68)
- ▶ Instrumental/Vocal Composition (see page 67)
- ▶ Music (see pages 47 and 66)
- ▶ Music Studies (see page 67)
- ▶ Popular Music Studies (see pages 47, 67, and 68)
- ▶ Songwriting (see page 68)

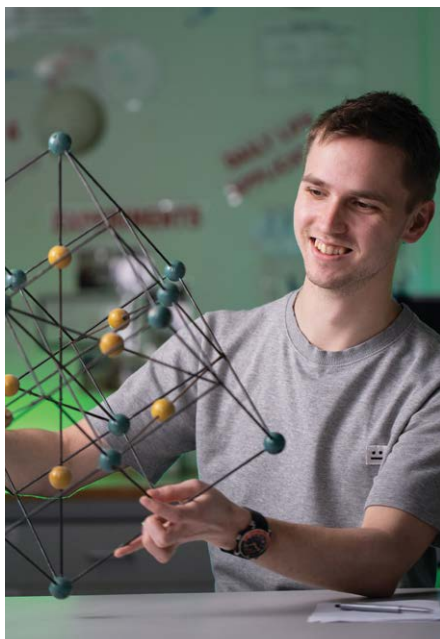
PSYCHOLOGY

- ▶ Brain Sciences and Mental Health (see page 71)
- ▶ Cognitive Science (see page 71)
- ▶ Criminal Justice and Psychology (see page 71)
- ▶ Educational Psychology (see pages 47, 55, and 71)
- ▶ Health Psychology (see pages 61 and 71)
- ▶ Māori Psychology (see page 71)
- ▶ Mental Health: Principles and Applications (see page 71)
- ▶ Psychological Science (see pages 47, 71, and 73)
- ▶ Work and Organisational Psychology (see page 71)

SCIENCE

- ▶ Actuarial Science (see pages 50, 57, and 73)
- ▶ Artificial Intelligence (see pages 57 and 73)
- ▶ Biology/Marine Biology (see page 73)

- ▶ Biomedical Sciences: Human Genetics; Molecular Pathology; Molecular Pharmacology and Medicinal Chemistry (see page 48)
- ▶ Biotechnology (see page 73)
- ▶ Cell and Molecular Bioscience (see page 73)
- ▶ Chemistry (see page 73)
- ▶ Climate Science (see pages 58 and 73)
- ▶ Computer Science, Electronic and Computer Systems (see pages 57 and 73)
- ▶ Data Science (see pages 47, 50, and 73)
- ▶ Development Studies (see pages 47, 58, and 73)
- ▶ Earth Science (see pages 58 and 73)
- ▶ Ecology and Biodiversity (see page 73)
- ▶ Environment and Sustainability, Environmental Science, Environmental Studies (see pages 60 and 73)
- ▶ Geography (see pages 47, 58, and 73)
- ▶ Information Systems (see pages 50 and 73)
- ▶ Mathematics, Statistics (see pages 47, 57, and 73)
- ▶ Physics (see page 73)
- ▶ Psychological Science (see pages 47, 71, and 73)
- ▶ Science Communication (see pages 51 and 73)
- ▶ Science in Society (see page 73)
- ▶ Space Science (see page 73)



SOCIAL SCIENCES

- ▶ Criminology (see page 47)
- ▶ Cultural Anthropology (see pages 47 and 58)
- ▶ Cultures and Identities (see page 60)
- ▶ Development Studies (see pages 47, 58, and 73)
- ▶ Economics (see page 50)
- ▶ Environmental Humanities (see page 58)
- ▶ Environmental Studies (see pages 58 and 73)
- ▶ Gender and Sexuality Studies (see page 47)
- ▶ Geography (see pages 47, 58, and 73)
- ▶ Globalisation, Movement, and Change (see page 60)
- ▶ Human Rights, Justice, and Peace (see page 60)
- ▶ International Relations (see page 47)
- ▶ Kaitiakitanga (see page 47)
- ▶ Māori Studies (see page 47)
- ▶ Media Studies (see pages 47 and 51)
- ▶ Philosophy (see page 47)
- ▶ Social Policy (see page 47)
- ▶ Sociology (see page 47)
- ▶ Study of Religion (see page 47)

 **FIND OUT MORE**

 wgtn.ac.nz/subjects



WELCOME WELL

PIPITEA CAMPUS

Study Law and Commerce in the heart of Wellington's legal, government, and business district.



KELBURN CAMPUS

The centre of your first-year experience.



UNLOCK YOUR CAREER

We have strong connections with community, corporate, cultural, diplomatic, legal, media, non-governmental, political, public sector, and scientific organisations. Our capital-city connections mean students have excellent opportunities for part-time work, volunteering, and internships, as well as networking for jobs once they graduate.



NGĀ MOKOPUNA

Ngā Mokopuna (formerly the Living Pā) is the name of the marae wharekai and the new building the aspires to Living Building™ certification. Opened on 6 December 2024, it is one of the world's most environmentally responsible buildings.

WELLINGTON

SUSTAINABILITY

In 2024, Victoria University of Wellington was ranked in the top 100 universities internationally in the QS World University Rankings for Sustainability.

STUDENT LIFE IN WELLINGTON

Wellington is a student-friendly city that makes the most of its natural surroundings. It's compact and easy to get around. You can walk just about anywhere or ride our great public transport system, including buses, trains, and the famous Wellington Cable Car. In just minutes, you can escape the city to explore miles of coastline, take a walk in native bush, or relax on sandy beaches. Visit galleries and museums, get among the vibrant nightlife, and check out the street festivals, theatre shows, and music gigs, or sporting events such as the Hurricanes' games at the stadium.



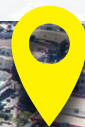
GLOBAL REPUTATION

The University is ranked in the top 2 percent of the world's universities overall. It is New Zealand's top ranked university for intensity of high-quality research (2018 Performance-Based Research Fund), and in 15 subject areas, we are among the top 1 percent of the world's universities (2024 QS World University Rankings by Subject). A number of our staff have also won National Tertiary Teaching Excellence awards for innovative teaching.



TE ARO CAMPUS

Explore Architecture and Design Innovation and soak up the culture in the creative Cuba Quarter.



GET READY FOR STUDY

**INFORMATION
EVENINGS**
(page 75)

JUNE
Scholarship
applications
open for 2026
(page 32)



**GUIDE TO
UNDERGRADUATE STUDY
AVAILABLE**

1 SEPTEMBER
School-leaver scholarship
applications due
(page 32)



MAY 2025

JUN 2025

JUL 2025

AUG 2025

SEP 2025

OCT 2025

JUNE
Explore accommodation
options for 2026
(page 34)

**NZSM
PERFORMANCE AUDITIONS**
Applications due 21 July
(page 67)

SEPTEMBER
Course
enrolments open
for 2026

MID-SEPTEMBER
Halls of residence
offers sent out
(page 34)

22 AUGUST
Open Day
(page 74)



1 DECEMBER
International students'
first-year admission
applications due for
February 2026 intake



20 JANUARY 2026
Study applications due

23 FEBRUARY 2026
Trimester 1 begins



8 FEBRUARY 2026
Hall residents move
in for Tau Mai week



1 NOVEMBER
School leavers
should apply to
study by this date
to ensure a place
in their preferred
programme

1 DECEMBER
School leavers
should enrol in
courses by this
date to ensure
a place in their
preferred courses



16–20 FEBRUARY 2026
New Students' Orientation
week and International
New Students' Orientation
(page 16)





LIFE ON CAMPUS

Your journey at university will offer you a range of new and exciting experiences. You'll have access to student services and activities to help you succeed both in and out of the classroom.

The University has three central city campuses: Kelburn, Pipitea, and Te Aro. Next time you're in town, book a campus tour or visit our halls of residence, and get a taste of student life in Wellington. See page 76 for more information.

ACADEMIC SUPPORT

Learning advisers at Te Taiako—Student Learning can work with you to develop the academic study and writing skills necessary for university study at undergraduate and postgraduate level. We provide workshops, resources, and individual appointments.

Tītoko is the Centre for Student Success that provides comprehensive support for students across all the University's faculties and schools. We are your first point of contact for questions about studies, student administration, support services, and student life in general. Every student has access to a student success adviser who can provide more in-depth support.

 wgtn.ac.nz/student-learning


ART GALLERY

Te Pātaka Toi Adam Art Gallery, the University's on-campus art gallery, initiates, produces, and presents a highly regarded programme of exhibitions, events, and publications; manages and develops Ngā Puhipuhi o Te Herenga Waka—Victoria University of Wellington Art Collection; and provides a vital platform for critical thinking across media, disciplines, cultures, and contexts. The gallery is open Tuesday to Sunday and admission is free.

 adamartgallery.nz

CAREERS AND EMPLOYMENT

Te Ratonga Rapu Mahi—Wellington Careers and Employment can assist you with the exploration of career ideas, the career implications of subject choices, and details of specific jobs and employers. We help you meet employers, apply for jobs and internships, and provide resources for ongoing career development.

 wgtn.ac.nz/careers

CLASSICS MUSEUM

The Classics Museum, located on the Kelburn campus, houses a small collection of antiquities, mostly Greek, Roman, and Etruscan. Objects on display range from a marble figurine from 2300 BCE through to Roman coins and objects from around the sixth century CE. The collection includes vases, statues, and coins, as well as objects from daily life such as mirrors, nails, sling bolts, lamps, and dice. It was conceived, and continues to be developed, as a teaching collection, but we also welcome any interested visitors.

 wgtn.ac.nz/classics-museum

CLUBS

Joining a club is a great way to meet people, find your community, learn new skills, and make your experience at the University a rich and rewarding one. Joining a club can add valuable balance in your life, support your wellbeing and academic performance, and boost your CV. With more than 140 clubs on campus, including academic, cultural, performing arts, political, social, religious, and sporting groups, there's sure to be one for you.


 wgtn.ac.nz/clubs


DISABILITY SERVICES

Te Amaru—Disability Services works in partnership with students and staff to ensure students can fully participate and achieve their aspirations, and to strengthen the University's culture of inclusion. At our university, disability includes the Deaf and those with injuries or physical, mental, sensory, specific learning, or health impairments. The team provides individual coaching, liaison with academic staff, adaptive technology, inclusive learning software, sign-language interpreting, lecture information capture, assessment support, mobility parking, and quiet places to rest and study. Students can meet with a disability and inclusion adviser on campus or online.

Each campus has an accessible route, which is indicated on the maps.

 disability@vuw.ac.nz

 [@vuwequitywellbeing](https://www.facebook.com/vuwequitywellbeing)

 [@vuwequitywellbeing](https://www.instagram.com/vuwequitywellbeing)

 wgtn.ac.nz/disability

 wgtn.ac.nz/maps

FINANCE

Te Ratonga Penapena Pūtea—Student Finance can provide practical advice on budgeting, coping financially, hall payment plans, and help with some questions related to Student Loan and Student Allowance applications. We can also provide emergency financial assistance through the Pūtea Āwhina—Hardship Fund.

i wgtn.ac.nz/financial-advice

HEALTH AND COUNSELLING

Our health professionals at Mauri Ora—Student Health and Counselling provide a full range of health services, including care if you have had an accident, if you are unwell, or if you are managing an ongoing health condition. Appointments could be for ACC injuries, contraception, gender-affirming healthcare, immunisations, or sexual health checks. Same-day appointments are available for urgent cases. Consultations are typically at no cost for registered patients.

Counsellors are available on all campuses to confidentially discuss personal and academic issues that may be affecting your wellbeing, learning, or relationships. Counsellors provide a range of support options such as individual, group, same-day, and short-term counselling.

i wgtn.ac.nz/mauri-ora



ORIENTATION

New Students' Orientation is your opportunity to find your way around, meet new people, and pick up some vital academic preparation skills. Get organised and set up for a successful year of study with help from our student ambassadors and the UNI101 programme, while enjoying fun activities and gigs all over campus.

i wgtn.ac.nz/orientation

RAINBOW AND INCLUSION

The University's kaiārahi kahukura—Rainbow and inclusion adviser is here to offer guidance to Rainbow students while on their journey at university, including students who are questioning their gender or sexuality or who don't like using labels. They can help with:

- ▶ connecting with the Rainbow and university communities
- ▶ family, culture, faith, and being queer
- ▶ finding Rainbow-friendly support in the community
- ▶ legal and preferred name changes
- ▶ questions about gender and sexuality.

These conversations are private and confidential. Send us an email with questions or to make an appointment.

Our Rainbow hub webpage has more information on support for Rainbow students and Rainbow communities on campus.

✉ rainbow@vuw.ac.nz

f [@vuwequitywellbeing](https://www.facebook.com/vuwequitywellbeing)

@ [@vuwequitywellbeing](https://www.instagram.com/vuwequitywellbeing)

i wgtn.ac.nz/rainbow

REFUGEE-BACKGROUND STUDENTS

Here at Te Herenga Waka, we have a refugee-background student adviser who provides one-to-one support and guidance, connects you with support services, and ensures that you benefit from available opportunities during your study.

These supports are also available to students with asylum status (those who have not yet obtained their refugee status). We can assist you with the enrolment process, connect you with the English for Academic Purposes team for free courses, and support you through the change of your status from international to domestic student.

✉ refugee-backgroundstudents@vuw.ac.nz

📘 @vuwequitywellbeing

📷 @vuwequitywellbeing

📍 wgtn.ac.nz/refugee-background-students

SPIRITUAL SUPPORT

Our 10 chaplains provide pastoral and practical support for all students, regardless of background or belief. We're always available to talk. Drop by Ramsey House (8 Kelburn Parade) for \$2 hot drinks any day of the week and \$2 toasties and baking on Thursdays and Fridays, or MZ20 at Pipitea campus for free coffee and a friendly study space.

📍 chaplaincyvuw.org.nz



SPORTS AND RECREATION

We offer a range of sports opportunities and support services, catering for casual to competitive participants. These include drop-in casual sports sessions, social leagues, national tertiary sports tournaments, and support for high-performance athletes—including sports scholarships and our Athlete Support Network.

Success starts with self-care—find your balance with University Recreation Wellington. Your on-campus team is committed to supporting the student community through fitness, wellbeing, clubs, and sports opportunities. Focus on your own wellbeing by staying active, re-energising, and connecting socially. Sign up for an affordable fitness membership and access functional fitness equipment, weights, a comprehensive selection of cardio equipment, and our popular group exercise classes. Our staff are friendly and welcoming, and our services are inclusive to all. We have all-gender bathroom facilities available at our Kelburn Recreation Centre.

 wgtn.ac.nz/sports

 wgtn.ac.nz/recreation





WELLBEING

We are dedicated to enhancing student wellbeing and empowering you to participate in opportunities that strengthen your wellbeing skills. Stay well while you are studying with a range of student-led wellbeing programmes at Manawa Ora—Student Wellbeing. We host a variety of activities and events in the Bubble, a welcoming place for you to take time out and connect with other students. Come along to our wellbeing initiatives such as Storycraft, Paw Therapy, craft days, celebrations of language weeks, and other events.

Use our Wellbeing Kete modules to empower you with wellbeing skills so you can thrive during your study and lead happy and fulfilling lives beyond university.

 student-wellbeing@vuw.ac.nz

 [@vuwequitywellbeing](https://www.facebook.com/vuwequitywellbeing)

 [@vuwequitywellbeing](https://www.instagram.com/vuwequitywellbeing)


 wgtn.ac.nz/wellbeing

WGTN HALL

WGTN Hall is a hall without walls, designed for students residing in the greater Wellington region who don't live in a hall of residence. WGTN Hall gives you the chance to enjoy your first-year experience by offering a range of social activities, academic and wellness support, and opportunities to connect with other students and make new friends. Get more information and register for WGTN Hall online.

 wgtn.ac.nz/wgtn-hall

 **FIND OUT MORE**

 wgtn.ac.nz/2026-students

LEADERSHIP AND STUDYING OVERSEAS

The University offers many opportunities for you to develop your leadership skills and engage with local, national, and global communities.

GROW YOUR LEADERSHIP POTENTIAL

Starting in 2026, Te Herenga Waka will offer an exciting programme for students who want to build leadership skills, learn more about global issues, and get involved in the community. This programme is all about flexibility—you get to choose how you want to upskill and you can tailor the experience to match your personal and career goals.

By joining this programme, you can:

- ▶ gain new experiences, develop skills, and connect with other students
- ▶ engage with issues and challenges that affect our world
- ▶ give back to your community through volunteering and service
- ▶ develop leadership skills and make a positive impact
- ▶ grow your professional network and boost your employability
- ▶ participate in intercultural experiences
- ▶ expand your thinking and get ready for your future career.

The best part? This programme is free, fun, and fits around your schedule. You can complete it at your own pace and spread it out over your degree as well—whatever works best for you! Plus, when you finish, it will be included on your academic transcript, which looks great on your CV and helps you stand out when applying for jobs.

✉ wellingtonplus@vuw.ac.nz

OVERSEAS EXCHANGE

Rereao—Wellington Global Exchange gives you the opportunity to travel and study overseas while still progressing your degree. Immerse yourself in another culture and complete up to two trimesters of full-time study at one of our more than 140 partner universities around the world.

During your exchange, you will pay your normal tuition fees to Te Herenga Waka. Students eligible for StudyLink loans and allowances can continue to receive these while on exchange. Grants and scholarships are also available to support you with going on exchange. Contact us for more information.

✉ student-exchange@vuw.ac.nz

ℹ wgt.ac.nz/student-exchange





MĀORI STUDENTS

Nau mai, haere mai, welcome to Te Herenga Waka. We have a supportive whānau environment waiting to welcome you here. Broaden your learning opportunities by working with quality lecturers across the disciplines.

Māori future-student advisers

Our kaitawaka Māori (Māori future-student advisers), Te Mapihi Tutua-Nathan (Ngāti Tūwharetoa, Raukawa, Ngāti Awa) and Tayla Petera-Gerrard (Te Rawa, Ngā Puhī, Ngāti Porou), are your first point of contact at the University. They can provide advice on university study, planning your programme, grants, scholarships, and the range of services for Māori students that will help you achieve your academic goals.



✉ temapihi.tutuanathan@vuw.ac.nz



✉ tayla.petera-gerrard@vuw.ac.nz



FIND OUT MORE



wgtn.ac.nz/maori-at-vic

SUPPORT ON CAMPUS

Āwhina—Māori Student Success

Āwhina is an all-Māori team of past and current university students. We are one part of the on-campus whānau for taura Māori and our goal is to help you make the most of your time at Te Herenga Waka.

To do this, we strive to provide a culturally safe, positive, and holistic experience for taura Māori that encourages cultural confidence and academic success. This means helping you get the grades you want without sacrificing who you are. We are here to provide support for all Māori students enrolled at the University, whether you are a school leaver or a mature student, and whether you know your tūrangawaewae or not.

Through a shared experience with us and other taura Māori, we will help you develop your individual skills and find your place to stand. Some of our regular services include:

- ▶ study wānanga
- ▶ one-to-one hui with Āwhina kaiakiaki
- ▶ connecting you with other taura Māori
- ▶ general get-togethers and academic workshops
- ▶ advocacy
- ▶ referrals to other services.

✉ awhina@vuw.ac.nz

 facebook.com/AwhinaVUW

 instagram.com/awhina_vuw

Health and counselling

Professional, confidential counselling is available for any issue affecting personal or academic success (see page 16).

Library support

The Library has a kairauhī who specialises in providing study support with a kaupapa Māori focus.

Māori learning adviser

Te Taiako—Student Learning (see page 14) has a kaiārahi ako Māori (Māori learning adviser) to support Māori students with study and writing skills.

STUDENT GROUPS

Ngāi Tauira

Ngāi Tauira, the University's Māori students' association, provides support to Māori students for their specific cultural, educational, political, and social needs.

Ngā Rangahautira

Ngā Rangahautira, the Māori Law students' association, is a group that is passionate about developing skilled Māori Law students with a commitment to kaupapa Māori.

Ngā Tāura Ūmanga

Ngā Tāura Ūmanga, the Māori Commerce students' association, plays a key role in developing strong relationships between Māori students, staff, and alumni within the Wellington School of Business and Government.

Te Hōhaieti o Te Reo Māori

Te Hōhaieti o Te Reo Māori, the Māori Language Society, is a group that seeks to provide space at the University for students to utilise and strengthen their use of te reo Māori. Te Hōhaieti organises and facilitates activities and events for students, regardless of their te reo Māori proficiency.

MARAE

Te Tumu Herenga Waka is the University's marae on our Kelburn campus. Established in 1980, it was the first marae to be set up at any university campus in Aotearoa. Six years later, Te Tumu Herenga Waka (the wharenuī) was opened. In December 2024, Ngā Mokopuna was opened in the marae complex. You can read more about it on the next pages.

ngā mokopuna



TIAKINA A PAPATŪĀNUKU— CARING FOR PAPATŪĀNUKU BY OUR ACTIONS

Ngā Mokopuna is our new marae-based learning, teaching, research, and engagement hub.

Ngā Mokopuna—meaning ‘descendants’ in te reo Māori—reflects our commitment to nurturing future generations. It builds on the aspirations set nearly 40 years ago by former staff and students, and will shape the future for new tauira (students) and kaimahi (staff) coming into the space.

It will be a transformative learning and teaching space that will foster Indigenous knowledge and innovation to solve pressing societal and environmental challenges. The new marae complex includes open spaces, study areas, teaching and seminar rooms, offices, and a wharekai (dining room).

“As students, we are so excited about Ngā Mokopuna, to have a new space to come together, to be free to be ourselves as Māori and learn about sustainable living.”

Ashley McGregor (Te Rarawa)
Student, Bachelor of Arts and co-president,
Te Hōhaietī o Te Reo Māori



“Ngā Mokopuna brings to life our values—it’s about people joining forces to solve problems, share knowledge, and create community, with a focus on tikanga and sustainability.”

Professor Rawinia Higgins (Tūhoe)
Tumu Ahurei—Deputy Vice-Chancellor
(Māori and Engagement)





PASIFIKA STUDENTS

Tālofa lava. Mālō ni. Kia orana. Mālō e lelei. Ni sa bula vinaka. Fakaalofa lahi atu. Halo olgeta. Ia orana. Kam na mauri. Gude tru. Kaselehlie. Kia ora, and warm Pacific greetings.

Come and join our Pasifika community at Te Herenga Waka. Our friendly, supportive 'āiga (family) will help you get the most out of your studies, make new friends, and enjoy your time here. Joining our community will be one of the best decisions of your life.

Pasifika future-student advisers

Tapu Ki Tea Vea and Fa'aaliga Leota, the Pasifika future-student advisers, are your first point of contact at the University. They can provide advice on university study, planning your programme, scholarships, admission, and support services available to Pasifika students that will help you achieve your academic goals.



✉ tapu.vea@vuw.ac.nz
📞 04 463 6670



✉ faaaliga.leota@vuw.ac.nz
📞 04 463 6673

SUPPORT ON CAMPUS

Pasifika Student Success

The Pasifika Student Success team is the University 'āiga who supports you as you transition into tertiary study. The team fosters Pasifika learning and teaching communities in an environment that is culturally welcoming, safe, inclusive, and focused on academic excellence, personal growth, and wellbeing.

✉ pasifika-student-success@vuw.ac.nz

f facebook.com/pasifikavictoriauniversitywellington

@ instagram.com/pasifikavuw

Pasifika faculty student support

Within the Pasifika Student Success team, there are Pasifika engagement advisers who are based in all the faculties at the University. They provide holistic and advocacy support, one-to-one appointments, course-specific study sessions, exam preparations, Pasifika events, and learning and development workshops for domestic and international undergraduate and postgraduate students.

Pasifika learning adviser

Te Taiako—Student Learning (see page 14) has a Pasifika learning adviser to support Pasifika students with study and writing skills.

Library support

The Library has a Pasifika library navigator and Pasifika student liaison to assist Pasifika students.

STUDENT GROUPS

The Pasifika Students' Council is a student representative group that consults and supports the University's Pasifika students. The council provides events for all Pasifika students to enhance their university experience.

There are several clubs for Pasifika students, including the:

- ▶ Cook Islands Students' Association
- ▶ Fijian Students' Association
- ▶ Melanesian Students' Association
- ▶ Niuean Students' Association
- ▶ Pacific Islands Commerce Students' Association
- ▶ Pasifika Law Students' Society
- ▶ Sāmoan Students' Association
- ▶ Tokelauan Students' Association
- ▶ Tongan Students' Association
- ▶ Tuvaluan Students' Association.

To join, go to the online clubs directory or attend the clubs days during the first week of Trimester 1.

i wgt.ac.nz/clubs



FIND OUT MORE

i wgt.ac.nz/pasifika-at-vic



INTERNATIONAL STUDENTS

Welcome, bienvenidos, 欢迎, bienvenue, selamat datang.

The University is home to international students from more than 120 countries. As an international student wanting to study at Te Herenga Waka, your first point of contact is Te Kahupapa—Wellington University International.

Our international team assists students with the application and enrolment process, and can answer any questions you have about your study options. We also host a week-long International Orientation programme and other events to help you settle into Wellington and university life.

SUPPORT

International student support

The team at Te Haumiri—International Student Experience is dedicated to supporting international student success and provides a range of services to ensure students achieve their goals. We offer personal, academic, and cultural support throughout your studies.

✉ international-support@vuw.ac.nz

📍 wgtn.ac.nz/ise

International students' association

The Victoria International Students' Association (V-ISA) is a student representative group that focuses on speaking to issues affecting international students and provides social events to foster a community spirit.

📍 wgtn.ac.nz/international-students-association



STUDENT GROUPS

There are several cultural clubs for students with an international focus, including the:

- ▶ African Students' Association
- ▶ Cambodian Students' Association
- ▶ Chinese Students' Association
- ▶ Filipino Student Association
- ▶ Friends of Korea
- ▶ German Club
- ▶ Hong Kong Society
- ▶ Indian Students' Organisation
- ▶ Indonesian Students' Association
- ▶ Iranian Club
- ▶ Japanese Students' Association
- ▶ Latin American and Spanish Club
- ▶ Malaysian Students' Organisation
- ▶ Muslim Students' Association
- ▶ Myanmar Student Association
- ▶ Pakistan Student Association
- ▶ Vietnamese Students' Association.

📍 wgtn.ac.nz/clubs

INTERNATIONAL ADMISSION

For information about admission requirements and the Foundation Studies programme for international students, see page 41.

The application procedure and deadlines described in this publication may differ for international student applications.

Check our website or get in touch with our team.

Te Kahupapa—Wellington University International

📞 0800 04 04 04 ✉ international@vuw.ac.nz

📍 wgtn.ac.nz/international

INFORMATION FOR WHĀNAU

Preparing to study at university is exciting, but it can also present challenges for young people: students need to make important decisions, juggle deadlines, and develop their independent skills. There are plenty of ways you can support your rangatahi in developing their independence and taking charge of their future.

DECIDING WHAT TO STUDY

To apply for university, students need to choose a degree and a subject (major) that they want to study in that degree. This can be a tough choice and some students struggle to make this decision alone.

How can you help?

- ▶ Talk to your young person about their studies and help them identify the subjects they enjoy and care about.
- ▶ Schools are a wealth of support—encourage your young person to speak with their teachers or get them to book an appointment with their school careers adviser to get expert advice and guidance.
- ▶ Encourage them to ask their older friends and whānau about their careers. What do they enjoy? How did they get into that work?
- ▶ Visit careers expos and our university events (see page 74) with your young person, and then discuss the career and study options they were most excited about.
- ▶ If your rangatahi has a specific subject or career in mind, suggest that they do a couple of days of shadowing or work experience in that area to see if it's right for them.



NAVIGATING THE APPLICATION PROCESS

The application process can be daunting and unfamiliar to students as it requires them to manage deadlines and communicate with the university themselves.

How can you help?

- ▶ If they don't already have one, help your rangatahi set up a personal email account with a sensible email address. Encourage them to take responsibility for checking their own emails once every day or two, so they don't miss important messages.
- ▶ Support them in identifying and sticking to key deadlines, especially for scholarship and accommodation applications. Emails will come out to remind students, but it could also help to display the deadlines somewhere very visible, such as on the fridge or their bedroom door.
- ▶ We conduct school visits throughout the year to offer support to students. Keep an eye out for dates in your school newsletter and encourage your young person to attend.
- ▶ If they are struggling with the process, encourage them to seek help by booking an appointment with one of our future student advisers (see page 76).
- ▶ Prepare any documents they may require; for example, certified copies of a passport or birth certificate and a passport-sized photograph.
- ▶ Support them by applying for student finance through StudyLink.

PREPARING FOR UNIVERSITY LIFE

Moving away from home and into halls of residence is an exciting challenge. While making new friends and exploring new surroundings, students will also need to manage their own wellbeing.

How can you help?

- ▶ Support students to build good time-management skills and study routines. This includes getting started in the morning without a wake-up call!
- ▶ Teach your young person practical domestic skills, such as budgeting, using public transport, using a washing machine, and using and emptying a vacuum cleaner.
- ▶ Self-care is especially important when living away from home, so encourage your young person to learn how to make healthy food choices, prioritise sleep, limit device use in the evenings, and find exercises that they enjoy.
- ▶ Normalise the idea of asking for help. Encourage young people to recognise when they feel confused, stuck, or overwhelmed and to see these feelings as signals that they might need help. Your young person will have access to a wealth of student services to help them succeed.



FIND OUT MORE



wgtn.ac.nz/parents-whanau-2026





WHAT UNIVERSITY STUDY WILL COST

Planning your finances early will save you some stress when you get to university. As well as your fees, you will need to budget for accommodation, transport, textbooks, and other expenses.

FEES

Tuition fees are calculated on a per-point basis, so the amount you pay will depend on your choice of courses. Other fees of around \$1,225 per year cover student support services such as careers guidance, counselling, financial advice, health services, student advocacy, student publications, and student representation. You must pay your fees in full before courses start.

Domestic tuition fees for 2026 will be set in October 2025. International tuition fees for 2026 may be set earlier; contact Te Kahupapa—Wellington University International directly (see page 27).

For questions about fees, or to make a payment, contact the student fees advisers.

- 📞 0800 04 04 04
- ✉️ student-finance@vuw.ac.nz
- 📍 wgtn.ac.nz/fees

FEES-FREE TERTIARY STUDY

If you are a first-time tertiary learner in 2025 or later, you may be able to get free study or training for your final year. For more information about the final-year Fees Free policy, go to feesfree.govt.nz

HELP WITH PLANNING

The University's student finance advisers offer help with planning and managing your costs. Staff can also help with some questions related to your StudyLink applications. You can book an appointment or speak to a finance adviser by phone.

Student finance advisers

- 📞 0800 04 04 04
- ✉️ student-hardship@vuw.ac.nz
- 🌐 wgtn.ac.nz/financial-advice

STUDENT LOANS AND ALLOWANCES

For information on Student Loans and Student Allowances, contact StudyLink directly.

StudyLink

- 📞 0800 889 900
- 🌐 studylink.govt.nz



\$6,500–\$9,500

Average cost of domestic tuition fees per year

SCHOLARSHIPS

At Te Herenga Waka, we're here to support your future. We offer scholarships to reward your hard work and to make sure financial barriers or personal challenges don't hold you back.

SCHOLARSHIPS FOR SCHOOL LEAVERS

Our school-leaver scholarships support students who embody the University's values, including diversity and excellence in a range of endeavours such as sports, leadership, and commitment to community and sustainability.

Offering much more than financial recognition, our scholarships create communities of students who share the same ambitions, goals, backgrounds, and values.

We award hundreds of scholarships each year, helping to make your transition to student life easier.

Many of our school-leaver scholarships are named for a different type of pounamu (greenstone), a taonga for Māori. Pounamu can protect and be a source of strength for those who possess it and for future generations.

- ▶ Kahotea Outstanding Achievement Scholarship
- ▶ Kahurangi Māori Student Scholarship
- ▶ Mana Pasifika Scholarship
- ▶ Mātātoa Sports Scholarship
- ▶ Pakohe Sustainability Scholarship
- ▶ Raukaraka Leadership Scholarship
- ▶ Tangiwai Excellence Scholarship
- ▶ Totoweka Equity Scholarship

**Applications
open in June
and are due by
1 September
2025**

FIND OUT MORE

 wgt.ac.nz/scholarships-2026

FIND A SCHOLARSHIP

There are a number of other scholarships available for first-year students. Check out our database for the most up-to-date and comprehensive list of scholarships available for study at Te Herenga Waka. Links to other scholarship opportunities can be found on our website.

i wgtn.ac.nz/scholarships



WELLINGTON INTERNATIONAL EXCELLENCE SCHOLARSHIPS

These scholarships are available only to high-achieving international students currently studying in New Zealand and planning to study for an undergraduate degree at the University. These tuition-fee scholarships are valued at up to \$20,000 over three years of study.

Other scholarships for international students

The University also provides scholarships for international students at different times of the year. For more information, check the scholarships page on our website.

i wgtn.ac.nz/international-scholarships





ACCOMMODATION

Finding the right place to live in Wellington is as important as choosing the right course of study.

HALLS OF RESIDENCE

The University provides accommodation options for students in 13 halls of residence, from single rooms to apartments, or something in between. First-year halls are all fully catered and prices include power and internet. All halls are within easy walking distance of our campuses (see map on inside back cover). We prioritise the wellbeing and safety of our resident community—you can expect a high standard of care while living in our accommodation that sets you up well for your studies. You'll be supported by our dedicated staff and have access to the University's range of academic support services, as well as counselling, health, and recreation services. Check out Te Kopanga—University Accommodation Wellington's website for more information about each hall of residence.

How to apply for a hall

Apply online through Pūaha, our online self-service portal. Check the accommodation website for application and key dates.

We recommend you apply as soon as possible as we start to make offers of accommodation from mid-September. Most offers are made by the end of October. If we still have rooms available, you can apply right up to move-in day in February.

You are guaranteed an offer of accommodation if you are awarded one of our school-leaver scholarships, provided you apply in time. See page 32 for more information on our school-leaver scholarships and how to apply for one.

When applying for accommodation, you must select your three preferred halls. We will do our best to place you in one of your preferred halls. Applications open on 1 August 2025.

Catered halls	Single room weekly cost (\$)	Beds
Boulcott Hall	456	180
Capital Hall	516	320
Cumberland House*	476	227
Joan Stevens Hall	456	242
Katharine Jermyn Hall	420	390
Te Puni Village	524	398
Victoria House*	520	183
Weir House*	520	190

Self-catered halls	Weekly cost from (\$)	Beds
222 Willis Apartments	320	270
Education House	385	108
Everton Hall	285	194
Whānau Housing*†	201	50
Whānau Mārama Apartments	373	116
Whare Hīnau—Kelburn Flats*	251	246

*Halls with twin-share rooms available.

†For students with knowledge of te reo Māori and tikanga Māori.

All fees quoted are based on 2025 costs. Prices may vary for 2026.

Note: Charges are applied to your account, accessed through your accommodation portal, in four-weekly instalments (four weeks in advance). The first instalment is due before you move in.

Visit a hall

You and your whānau are welcome to visit our halls to see what hall life is like. You can drop in on Open Day (see page 74 for details), book a tour online, or simply contact the hall that you would like to visit.



OTHER OPTIONS

We can also help you find non-university accommodation—you may choose to board with a family, get a room in an existing flat, or set up your own flat or apartment with a group of friends. Contact us for assistance.

ACCOMMODATION GUIDE

The *Accommodation Guide* is available in May. Copies are sent to your careers adviser, or you can request one directly from us by emailing accommodation@vuw.ac.nz

CONTACT US

Te Kopanga—University Accommodation
Wellington

📞 04 463 5896

✉ accommodation@vuw.ac.nz



PLANNING AHEAD

CHOOSING YOUR SCHOOL SUBJECTS

The best way to prepare for university study is by choosing school subjects you are interested in and that will help you to develop a range of skills. Most of our degrees do not require you to have studied specific subjects at school. As long as you achieve University Entrance, you will be able to choose from a wide variety of subjects at Te Herenga Waka.

To achieve University Entrance, you need to study at least three approved subjects, so make sure you include these in your subject choices. To help you fully prepare for university study, we recommend taking four or five approved subjects for University Entrance in Year 13. Credits you gain in Years 11 and 12 will also count towards numeracy and literacy requirements. Go to page 39 to find the full details for University Entrance.

When selecting subjects, think about your interests, passions, and goals. It's more likely that you will perform well in subjects that you care about.

A small number of our degrees (such as Engineering, Midwifery, and Music) have subject-specific entry requirements. Make sure you check the requirements for the degrees you are interested in to ensure you meet these. If you're not sure whether your chosen degree or subject has subject-specific entry requirements, get in touch with one of our future student advisers who can help you make informed choices.



Scan the QR code
for more details.

VICSTART

VicStart provides an opportunity for senior secondary students to take university courses while still at secondary school.

Taking an entry-level university course while you're still at school—typically in Year 13—can help you get a head start on your university journey. You can explore your academic interests, earn credits towards your future degree at Te Herenga Waka, and better prepare yourself for university study.

VicStart is an opportunity to do a normal university course with other first-year university students. University courses run across a trimester, which typically includes 12 weeks of lectures. As a general rule, one course requires around 10 hours per week of study—this could be attending lectures (online or in person), tutorials, and labs, as well as working on assignments and preparing for exams. Some courses are available to be taken online, while others are designed to be experienced in person on campus.

VicStart runs alongside your secondary school learning programme while you work towards meeting University Entrance.

Eligibility

You can apply for VicStart if you:

- ▶ are 16 years or older by the time your course begins
- ▶ have met the literacy and numeracy requirements for University Entrance and have a high level of achievement at NCEA Level 2 (see page 39) or equivalent
- ▶ have approval from your secondary school.



VicStart Scholarship

You may also be eligible for a VicStart Scholarship, which covers up to 40 points' worth of course fees. When you apply for VicStart, you'll automatically be considered for a scholarship.

To be eligible for a VicStart Scholarship, you need to:

- ▶ have an NCEA Level 2 Certificate or above endorsed with Merit or Excellence
- ▶ be a domestic student
- ▶ provide evidence of support from your school to confirm that you're capable of undertaking university-level study while still at school.

Scholarships will be awarded after your NCEA Level 2 results have been released.



CHOOSING A DEGREE

Choosing your degree and major(s) can be complicated. Will you enjoy your study? Will you be good at it? Will you find the job of your dreams? Everyone is different—some people study for a degree to help them get a particular job and others want to keep their options open and study something they are fascinated with. There is no right way to approach this decision; just make sure you choose what you will enjoy spending time on—you will always do better studying what you enjoy.

WHERE CAN YOUR DEGREE TAKE YOU?


The University's Careers and Employment website has career development information to help you on your way right from your first year of study. You can learn about making career decisions, what you can do with your degree, preparing for work, employment during study and after you graduate, and adapting to the world of work.



MAKING CAREER DECISIONS

Making good decisions about your future starts with knowing yourself. Think about your skills, your interests, and the values that are important to you. Chat to your school's careers adviser to get started. Interactive tools are available online that can get you thinking broadly about what careers might suit you.

Check out the University's Careers and Employment website to find out more about the types of jobs and career paths available to you based on degrees and areas of study that interest you.

 wgtn.ac.nz/careers



ADMISSION

This section applies to New Zealand and Australian citizens and permanent residents. If you are an international student, see page 41.

To be accepted automatically into any degree at Te Herenga Waka, you will need to:

- ▶ achieve University Entrance
- ▶ fulfil any other degree-specific requirements (such as a performance audition)
- ▶ have your identity and residency details verified by the university, if required
- ▶ apply by the deadline.

For future students, Pūaha is where you go to apply for admission, search for scholarships, and explore accommodation options. You'll be able to start your application for admission at any time and return to it when you're ready to submit.

Once you've submitted your application, you'll be able to keep up to date with your application progress. You'll be notified of the acceptance of your application, which will allow you to then enrol in your chosen courses on Pūaha from September 2025.

If you are a school leaver, we recommend you apply for admission by 1 November 2025 and complete your enrolment by 1 December 2025 to ensure a place in your preferred courses.

You will normally need to be at least 16 years of age by the application closing date.



FIND OUT MORE



wgtn.ac.nz/apply

STUDENTS APPLYING WITH NCEA

These requirements apply to students who are currently in Year 13 or on a gap year.

University Entrance

University Entrance through the National Certificate of Educational Achievement (NCEA) has the following requirements.



NCEA LEVEL 3 CERTIFICATE

14 credits
at Level 3 in
an approved
subject

14 credits
at Level 3 in
an approved
subject

14 credits
at Level 3 in
an approved
subject

LITERACY

10* credits at Level 2
or above (5 in reading,
5 in writing)

NUMERACY

10* credits at Level 1
or above

*From specified lists of standards. Go to nzqa.govt.nz for a list of approved standards.

NCEA approved subjects for entrance to university

- ▶ Accounting
- ▶ Agriculture and Horticulture
- ▶ Biology
- ▶ Business Studies
- ▶ Calculus
- ▶ Chemistry
- ▶ Chinese
- ▶ Classical Studies
- ▶ Construction and Mechanical Technologies
- ▶ Cook Islands Māori
- ▶ Dance
- ▶ Design (Practical Art)
- ▶ Design and Visual Communication
- ▶ Digital Technologies and Hangarau Matihiko
- ▶ Drama
- ▶ Earth and Space Science
- ▶ Economics
- ▶ Education for Sustainability
- ▶ English
- ▶ French
- ▶ Geography
- ▶ German
- ▶ Hauora*
- ▶ Health Education
- ▶ History
- ▶ History of Art
- ▶ Home Economics
- ▶ Indonesian
- ▶ Japanese
- ▶ Korean
- ▶ Latin
- ▶ Mathematics/Pāngarau
- ▶ Media Studies
- ▶ Music Studies
- ▶ New Zealand Sign Language
- ▶ Ngā Mahi a te Rēhia*
- ▶ Ngā Toi*
- ▶ Ngā Toi Ataata*
- ▶ Ngā Toi Puoro*
- ▶ Painting (Practical Art)
- ▶ Photography (Practical Art)
- ▶ Physical Education
- ▶ Physics
- ▶ Printmaking (Practical Art)
- ▶ Processing Technologies
- ▶ Psychology
- ▶ Religious Studies
- ▶ Sāmoan
- ▶ Science/Pūtaiao
- ▶ Sculpture (Practical Art)
- ▶ Social Studies
- ▶ Spanish
- ▶ Statistics
- ▶ Te Ao Haka
- ▶ Technology/Hangarau
- ▶ Te Reo Māori
- ▶ Te Reo Rangatira
- ▶ Tikanga ā-Iwi*
- ▶ Tongan

*Only students engaged in learning and achievement derived from Te Marautanga o Aotearoa are eligible to be awarded credits in these subjects.



FIND OUT MORE



nzqa.govt.nz

STUDENTS APPLYING WITH CAIE

University Entrance

University Entrance through Cambridge Assessment International Education (CAIE) consists of:

- ▶ a minimum of 120 points on the New Zealand Tariff at A or AS level from any syllabus groups, which are broadly equivalent to those in the list of approved subjects for NCEA
- ▶ a D grade or better in syllabuses from at least three different syllabus groups (excluding Thinking Skills).

For the literacy and numeracy requirements you will need:

- ▶ an E grade or better in any one of AS-level Language and Literature in English, English Language, and Literature in English or English General Paper
- ▶ a D grade or better in IGCSE or GCSE Mathematics or any mathematics passed at AS level.

STUDENTS APPLYING WITH IB

University Entrance

University Entrance through International Baccalaureate (IB) consists of the full IB diploma (24 points minimum).

DISCRETIONARY ENTRANCE

University Entrance

To be considered for Discretionary Entrance, you must have achieved the University Entrance literacy and numeracy standards described in the NCEA section on page 39, or the equivalent from Cambridge Assessment International Education or International Baccalaureate.

- ▶ You will normally need to have an NCEA Level 2 Certificate with at least a Merit endorsement.
- ▶ Each Discretionary Entrance application is considered on its own merits and is in no way guaranteed. If you are applying directly from Year 12, you will need to have very strong

support from an adviser at your school. Your adviser's confidential recommendation will support your capability, maturity, motivation, and readiness to undertake degree-level study.

- ▶ If you are applying after an overseas exchange, you will need to provide written evidence of your study overseas and an adviser's recommendation as above. You will need to have completed Year 12 NCEA Level 2 or equivalent before you went on your exchange.
- ▶ Discretionary Entrance is not available for international students.

OTHER FORMS OF ADMISSION

There are full details on other forms of admission on our website.

These include:

- ▶ qualification assessment at entrance level—for students with University Entrance from outside New Zealand or a completed relevant Level 4 qualification from a recognised New Zealand tertiary provider
- ▶ qualification assessment above entrance level—for students who have already studied at degree or diploma level (Level 5 or above)
- ▶ Special Admission—for students who are over 20 and do not hold a recognised University Entrance qualification
- ▶ Provisional Admission—a restricted programme of study for students who do not achieve UE but meet certain academic requirements.

 [wgtn.ac.nz/admission](https://www.wgtn.ac.nz/admission)



FIND OUT MORE



[wgtn.ac.nz/course-planning](https://www.wgtn.ac.nz/course-planning)


IF YOU DO NOT GAIN ADMISSION

If you are not successful in gaining admission to Te Herenga Waka, you may wish to consider undertaking study at another tertiary institution and reapplying later. If you have special circumstances or questions about admission to the University, contact the Future Students team.

TOHU MĀORITANGA

This qualification is designed to provide a foundation in Māori culture and society, Māori customs and practice, Māori language, and academic and study skills in a culturally responsive learning environment.

The diploma takes one year of full-time study and you may be able to cross-credit up to 60 points to a Bachelor of Arts degree or 40 points to any other Bachelor's degree upon successful completion. You will be required to submit documents, including a personal statement and a CV, and participate in an interview to determine your suitability.

 wgtn.ac.nz/tohu-maoritanga

PASIFIKA PATHWAYS

The Diploma in University Studies (Pasifika Pathways) (DipUniPASP) is a one-year full-time pre-degree diploma programme designed to help you transition to university. Taught in a community learning environment, the programme will help you explore different career opportunities and get the skills and knowledge to succeed. Successfully completing this diploma allows you to apply for undergraduate degrees at Te Herenga Waka, even if you don't meet University Entrance requirements. Upon completion, you will be able to cross-credit up to 60 points towards a Bachelor's degree.

To apply for this programme, you'll need to provide a personal statement and letter of recommendation, and take part in an interview.

 wgtn.ac.nz/pasifika-pathways

INTERNATIONAL STUDENTS

International students have separate procedures for admission and first-year enrolment.

If you are coming from a New Zealand secondary school and studying National Certificate of Educational Achievement (NCEA), Cambridge Assessment International Education (CAIE), or International Baccalaureate (IB), you will need to achieve University Entrance (or equivalent). Gaining University Entrance (UE) means you meet the University's academic and English-language requirements.

Further details are on the University's international website. All international students will need to apply to Te Kahupapa—Wellington University International (see page 27 for contact details or go to wgtn.ac.nz/international-apply).

 wgtn.ac.nz/international

Foundation Studies

Our Foundation Studies programme helps international students who don't meet our entry requirements to prepare for undergraduate study. Victoria University of Wellington offers its own foundation programme and accepts many foundation programmes taught by other institutions.

The University's Foundation Studies programme is delivered by our partners at UP Education and offers successful students guaranteed entry into our undergraduate programmes.

The programme has four intakes per year and takes six to 18 months to complete, depending on your academic background and level of English. Apply for this programme through UP International College.

 wgtn.up.education

Te Kahupapa—Wellington University International

 04 463 5350  international@vuw.ac.nz

 wgtn.ac.nz/international

Chat to our friendly ambassadors

 wgtn.ac.nz/international

PLANNING YOUR FIRST YEAR

HOW A DEGREE WORKS

Courses

Your degree is made up of courses (also known as ‘papers’ at other universities). Courses are taught over one trimester or sometimes two trimesters. Each course is taught at a certain level. In your first year, you will normally take 100-level courses, while 200- and 300-level courses are more advanced. The number of courses you take in a year will vary depending on how many points each course is worth.

Some degrees have core courses that all students must complete.

Points

Most courses are worth 15 or 20 points each. The number of points indicates the workload—a 15-point course normally requires a total of 150 hours of study (including class time and independent study) and a 20-point course requires a total of 200 hours of study.

To pass a course, you need to complete a number of different assessments throughout the trimester. When you pass the course, you earn points towards your degree.

To complete a three-year Bachelor’s degree, you will need to gain 360 points. When studying full time, that’s an average course load of 120 points (six to eight courses) per academic year.

Majors

A major is your main subject. For example, you might do a Bachelor of Science with a major in Marine Biology. Each year you will take courses required for your major(s).

Double majors

A double major allows you to specialise in two subjects within one degree—an example of this could be a Bachelor of Arts with a double major in History and French. A double major requires the same number of points as a degree with only one major and should not take any extra time.

Some of our degrees allow you to take a second major from another degree—for example, you can do a Bachelor of Science with a double major in Physics and Film.

Minors

A minor is like a major, but requires fewer courses. To complete a minor, you’ll need to take courses in the subject at 100 level so you can continue with it at 200 level. Then, you need to complete 60 points at 200 level or above, with at least 15 of those points at 300 level.

Electives

You can take elective courses if you have space in your degree programme. Elective courses can be from other subject areas you are interested in.

Conjoint degrees

A conjoint degree allows you to complete two degrees in a shorter amount of time because courses can be cross-credited. For example, a conjoint Bachelor of Laws and Bachelor of Arts could be completed within five years.

Note that not all degrees can be done conjointly.



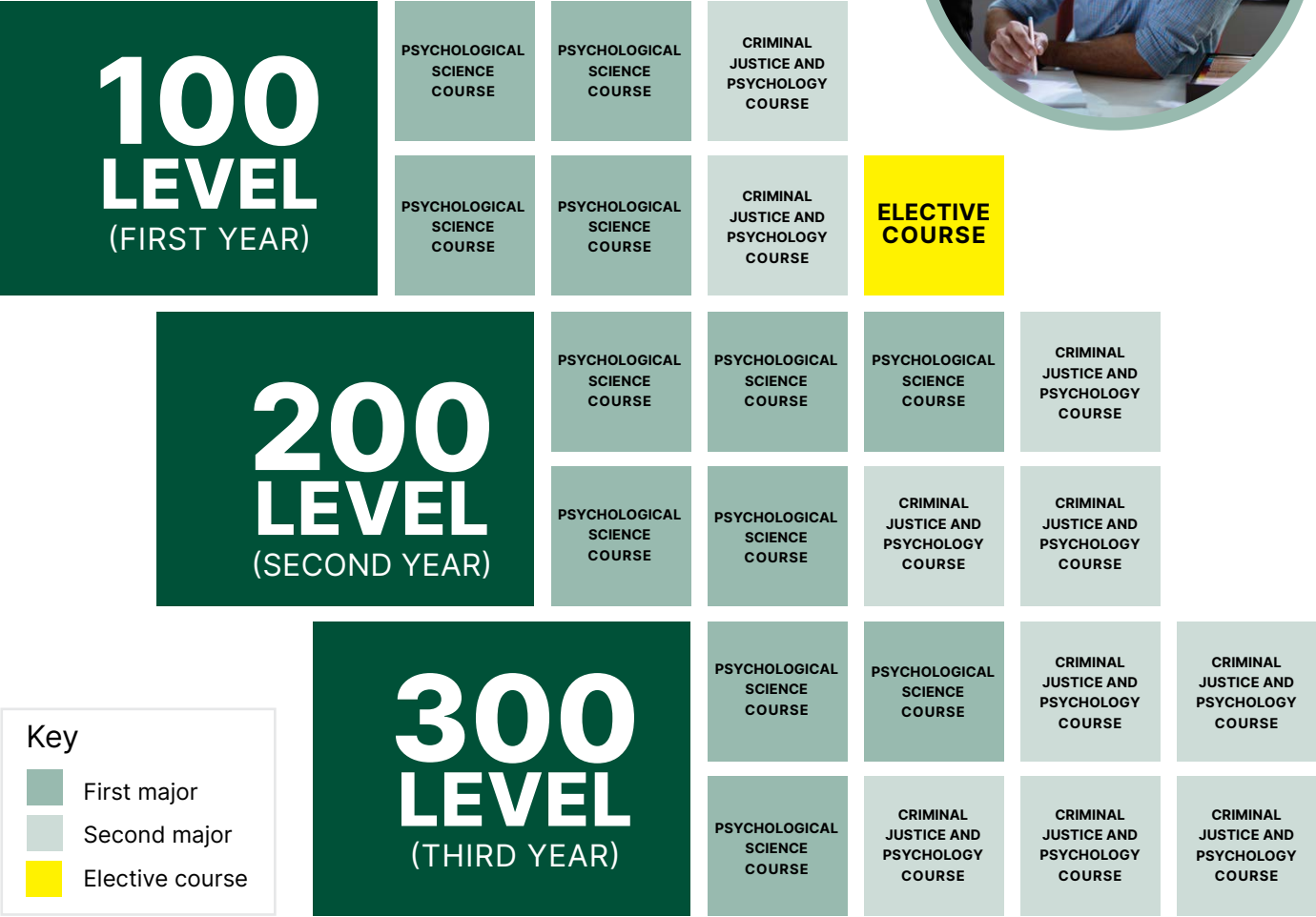
FIND OUT MORE



wgtn.ac.nz/how-degrees-work

DEGREE EXAMPLE

Below is an example of a Bachelor of Psychology with a double major in Psychological Science and Criminal Justice and Psychology.





Growing Wetlands by Nidhi Solanki for LAND 411 Landscape Architecture Design Studio V / Te Taupuni Mahi Pokepoke, Whakarākei i a Papa-tūā-nuku V.

ARCHITECTURAL STUDIES

Architecture is what gives us a home on this planet. It's all about combining creativity, technology, and problem-solving. You will learn how to use a range of design methods to create buildings and spaces that inspire, whether they are urban environments, sustainable buildings, or innovative interiors.

Our Tohu Paetahi Waihangā—Bachelor of Architectural Studies (BAS) introduces you to a range of subjects. As well as architecture, you will learn about landscape and interior architecture and how to address social and cultural issues related to creating built environments, such as equality,

sustainability, and wellbeing. You'll also gain the practical skills needed with the tools and software required for the design and construction of the built environment. If you enjoy a wide variety of subjects, Architecture could be perfect for you.

Our Architecture students are based at Te Aro campus in the vibrant Cuba Street area, among leading architecture firms and practices. The campus offers world-class facilities, hands-on learning, and guidance from expert academics and industry professionals.



AT A GLANCE

- ▶ No art background or portfolio is required to study architecture with us.
- ▶ Study at a dedicated campus with state-of-the-art workshops and equipment.
- ▶ Our university is known worldwide for its teaching, research, and expertise in the built environment.
- ▶ The core first-year classes will help you build your skills and learn about different subject areas within architecture before you decide the area you want to focus on.
- ▶ Learn about further study options to help you meet your career goals.
- ▶ Get support from our range of scholarships and internship opportunities.

SUBJECTS YOU COULD STUDY

- ▶ Architecture
- ▶ Architecture History and Theory
- ▶ Interior Architecture
- ▶ Landscape Architecture
- ▶ Māori Design and Environments

Above left: Shelly Bay Community Library model by Danbie Bong for ARCI 212 Architecture Design Integration I / Te Whakakotahitanga o ngā Tikanga Whakarākei Whare I.

Above right: Hollow by Deon Cromb for INTA 412 Interior Architecture Design Research / Te Mahi Rangahau o te Ao Whakanikoniko.

WHERE CAN ARCHITECTURE TAKE YOU?

Our students have gone on to pursue a range of careers, such as:

- ▶ architect
- ▶ building conservation designer
- ▶ community planner
- ▶ environmental designer
- ▶ interior designer
- ▶ landscape architect
- ▶ social and environmental policy adviser
- ▶ urban designer.

i [wgtn.ac.nz/careers](https://www.wgtn.ac.nz/careers)
i [wgtn.ac.nz/whats-next](https://www.wgtn.ac.nz/whats-next)

FIND OUT MORE

i [wgtn.ac.nz/study-architecture](https://www.wgtn.ac.nz/study-architecture)



ARTS

If you're interested in the cultural identity, history, and nature of other societies, then our Tohu Paetahi Aronui—Bachelor of Arts (BA) may be for you. By studying for a BA, you'll explore different parts of the human experience and how people interact as individuals and communities. You'll be encouraged to recognise multiple perspectives and develop flexible, creative, and critical thinking skills.

Our BA students are based at our Kelburn campus. This is our largest campus and home to many multi-purpose study, creative, and rehearsal spaces. By studying in New Zealand's creative capital, you'll be surrounded by important connections in the arts, heritage, industry, and politics. To broaden your opportunities, you can also explore other areas of study alongside the BA.

AT A GLANCE

- ▶ Study for New Zealand's most flexible BA, giving you the ability to explore different subjects, even if they're from another area of study.
- ▶ Our BA is ranked first in New Zealand across a range of humanities and social sciences subjects.
- ▶ Experience exchanges, field trips, internships, overseas study, and tours.
- ▶ Make use of our on-campus theatre spaces, museum, and art gallery.

SUBJECTS YOU COULD STUDY

- ▶ Academic and Professional Writing
- ▶ Art History
- ▶ Asian Studies
- ▶ Chinese
- ▶ Classical Studies
- ▶ Creative Writing
- ▶ Criminology
- ▶ Cultural Anthropology
- ▶ Data Science
- ▶ Development Studies
- ▶ Economics
- ▶ Education
- ▶ Educational Psychology
- ▶ English Literature
- ▶ Film
- ▶ French
- ▶ Gender and Sexuality Studies
- ▶ Geography
- ▶ German
- ▶ Greek
- ▶ History
- ▶ International Relations
- ▶ Japanese
- ▶ Kaitiakitanga
- ▶ Language Sciences
- ▶ Latin
- ▶ Māori Studies
- ▶ Mathematics
- ▶ Media Studies
- ▶ Modern Language Studies
- ▶ Music
- ▶ New Zealand Sign Language (NZSL)
- ▶ Pacific Studies
- ▶ Philosophy
- ▶ Political Science
- ▶ Popular Music Studies
- ▶ Psychological Science
- ▶ Public Policy
- ▶ Sāmoan Studies / Matā'upu tau Sāmoa
- ▶ Social Policy
- ▶ Sociology
- ▶ Spanish
- ▶ Study of Religion
- ▶ Te Reo Māori
- ▶ Theatre

WHERE CAN A BACHELOR OF ARTS TAKE YOU?

Our graduates have gone on to pursue a range of careers, such as:

- ▶ aid worker
 - ▶ artist
 - ▶ criminologist
 - ▶ diplomat
 - ▶ journalist
 - ▶ librarian
 - ▶ market researcher
 - ▶ musician
 - ▶ policy analyst
 - ▶ teacher
 - ▶ translator.
- i** [wgtn.ac.nz/careers](https://www.wgtn.ac.nz/careers)
- i** [wgtn.ac.nz/whats-next](https://www.wgtn.ac.nz/whats-next)



FIND OUT MORE

i [wgtn.ac.nz/study-arts](https://www.wgtn.ac.nz/study-arts)

BIOMEDICAL SCIENCE

Whether it's old diseases resisting treatment, or new diseases that are emerging, biomedical scientists explore the relationships between humans, health, and disease. In our Tohu Paetahi Mātai Rongoā Koiora—Bachelor of Biomedical Science (BBmedSc), you'll learn the science behind all of human life, from reproduction to ageing. Biomedical science is an exciting and rapidly advancing field of study, and our degree will provide you with a solid understanding of molecular and cell biology that could be the first step into a career in the medical field* or other health-related careers.

Learn from staff who are also doing amazing research. You could be taught by people developing groundbreaking treatments for cancer or brand new vaccines. If you have a strong interest in human health, biology, or chemistry, and are keen to develop your research skills and be at the cutting edge of science, then biomedical science could be the path for you.

*These careers may require further study.



AT A GLANCE

- ▶ Wellington has the largest concentration of science organisations in Aotearoa, some of them located right on our Kelburn campus.
- ▶ You'll be exposed to different careers in fields you might not have heard about, such as immunology, fertility, or drug discovery and development.
- ▶ We have tons of options if you're interested in doing further study in biomedical science and really want to make an impact on human health.
- ▶ Our state-of-the-art biology laboratories are located in a purpose-built facility at our Kelburn campus.

SUBJECTS YOU COULD STUDY

- ▶ Human Genetics
- ▶ Molecular Pathology
- ▶ Molecular Pharmacology and Medicinal Chemistry

WHERE CAN BIOMEDICAL SCIENCE TAKE YOU?

Our students have gone on to pursue a range of careers, such as:

- ▶ drug or vaccine researcher
- ▶ genetic or fertility counsellor
- ▶ laboratory technician
- ▶ microbiologist
- ▶ patent adviser
- ▶ pharmaceutical sales representative.

These careers may require further study.

i [wgtn.ac.nz/careers](https://www.wgtn.ac.nz/careers)

i [wgtn.ac.nz/whats-next](https://www.wgtn.ac.nz/whats-next)



FIND OUT MORE



[wgtn.ac.nz/study-bio](https://www.wgtn.ac.nz/study-bio)

BUILDING SCIENCE

Any building you enter has a history—from concept to design to construction. Studying building science will teach you how to examine building performance, look for improvements to the building process, and create safe, efficient, and sustainable buildings for your community. Our Tohu Paetahi Whare Hangahanga—Bachelor of Building Science (BBSc) is based at Te Aro campus and bridges the gap between architecture and engineering. In this degree, you'll get the chance to focus on project management from the initial design to delivery, or better understand the role of sustainability in developing buildings.

The skills our Building Science students gain are in high demand in Aotearoa's growing building and construction industry. If you're keen to become an expert in the science, technology, and economics of creating buildings, then a Bachelor of Building Science would be an excellent degree for you.

AT A GLANCE

- ▶ The first-year core courses will help keep your options open and give you a solid understanding of all parts of the built environment.
- ▶ Our strong ties to the wider building industry can lead to opportunities for hands-on learning and work experience.
- ▶ Learn at our dedicated campus with state-of-the-art workshops and equipment.
- ▶ Te Herenga Waka is an international leader in the subject of Building Science—you'll be learning from the best.

SUBJECTS YOU COULD STUDY

- ▶ Project Management
- ▶ Sustainable Engineering Systems



WHERE CAN BUILDING SCIENCE TAKE YOU?

Our students have gone on to pursue a range of careers, such as:

- ▶ building consent manager
- ▶ green-building designer
- ▶ project or worksite manager
- ▶ sustainable systems engineer
- ▶ quantity surveyor
- ▶ zero-carbon consultant.

i wgtn.ac.nz/careers
i wgtn.ac.nz/whats-next

FIND OUT MORE

i wgtn.ac.nz/study-building-science

COMMERCE

Business influences our society by creating opportunities, promoting creative solutions, and connecting people around the world. Wherever people are at work, they depend on business experts to keep their organisations moving forward.

Our Tohu Paetahi Tauhokohoko—Bachelor of Commerce (BCom) will prepare you for a successful career in business, and you'll gain a strong foundation in analytical, strategic, and operational skills. With a focus on real-world experience and hands-on projects, you'll gain practical knowledge that enhances employability in both local and global industries. The programme offers a variety of subjects, including Accounting, International Business, and Marketing, allowing you to tailor your education to align with your career aspirations.

The BCom is taught at our Pipitea campus, located opposite Parliament and in New Zealand's commercial, political, and leadership hub. You'll be in the centre of business and government, with opportunities to connect with important organisations and leaders through real-world projects, internships, and guest lectures.

AT A GLANCE

- ▶ You'll have access to industry placements and internships, enhancing career readiness.
- ▶ We are recognised globally for high-quality research and business education standards.
- ▶ You'll have opportunities to learn from expert faculty staff with extensive business experience.
- ▶ Our campuses are located in New Zealand's capital, ideal for networking with government and industry leaders.
- ▶ Our courses emphasise sustainability and innovation, preparing graduates for modern business challenges.



SUBJECTS YOU COULD STUDY

- ▶ Accounting
- ▶ Actuarial Science
- ▶ Commercial Law
- ▶ Data Science
- ▶ Econometrics
- ▶ Economics
- ▶ Finance
- ▶ Human Resource Management and Employment Relations
- ▶ Information Systems
- ▶ International Business
- ▶ Management
- ▶ Marketing
- ▶ Public Policy
- ▶ Sustainability and Ethics in Business
- ▶ Taxation
- ▶ Tourism Management

WHERE CAN COMMERCE TAKE YOU?

Our graduates have gone on to pursue a range of careers, such as:

- ▶ accountant
 - ▶ business analyst
 - ▶ entrepreneur
 - ▶ finance manager
 - ▶ human resource manager
 - ▶ marketing specialist
 - ▶ policy analyst
 - ▶ project manager
 - ▶ tax consultant.
- i** wgtn.ac.nz/careers
i wgtn.ac.nz/whats-next



FIND OUT MORE

i wgtn.ac.nz/study-commerce

COMMUNICATION

Communication is a powerful tool that influences how we understand others and the wider world around us. In our Tohu Paetahi Whakawhiti Kōrero—Bachelor of Communication (BC), you'll learn how to be an innovative, flexible, and effective communicator. When you study communication with us, you'll explore how different communication methods—writing, print, video, or social media channels such as Instagram and TikTok—can best express your message.

Our capital-city location in Wellington puts us close to New Zealand's political, commercial, and creative centre. As you choose a subject to specialise in within the BC, you'll be able to see how organisations within that area communicate their message to the public. You can finish your BC with a communication project in which you explore communication methods in more depth or create your own digital communication campaign.

AT A GLANCE

- ▶ The skills you gain from the BC will prepare you for work in a range of industries, while our diverse subjects can also prepare you for a specialised career path.
- ▶ You'll have the opportunity to be creative as you apply communication theory to a communications project of your own.
- ▶ Get a wider range of skills and knowledge by studying an additional subject alongside your BC major.
- ▶ Our capital-city location places you at the centre of many industries in New Zealand.
- ▶ We're the only university in New Zealand that offers undergraduate majors in Literary and Creative Communication and in Science Communication.



SUBJECTS YOU CAN STUDY

- ▶ Intercultural Communication
- ▶ Language Sciences
- ▶ Literary and Creative Communication
- ▶ Marketing Communication
- ▶ Media Studies
- ▶ Political Communication
- ▶ Science Communication

WHERE CAN COMMUNICATION TAKE YOU?

Our graduates have gone on to pursue careers in:

- ▶ creative industries
- ▶ government
- ▶ internal communications
- ▶ media
- ▶ non-governmental organisations
- ▶ policy development
- ▶ public relations
- ▶ public sector
- ▶ social advocacy groups.

i wgtn.ac.nz/careers

i wgtn.ac.nz/whats-next

FIND OUT MORE

i wgtn.ac.nz/study-communication

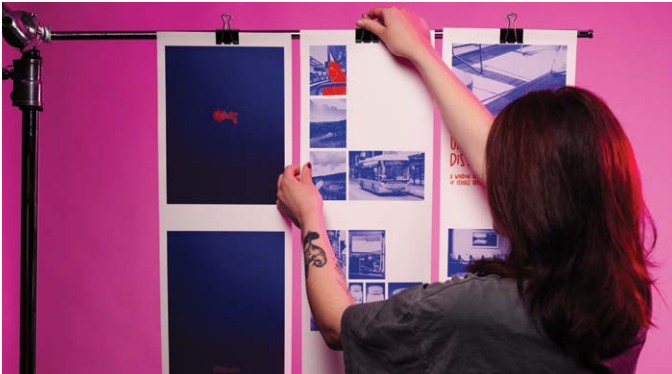
DESIGN INNOVATION

Design is all around us, and influences the way we experience the world. Our Tohu Paetahi Hoahoa—Bachelor of Design Innovation (BDI) will help you push the limits of creative thinking and develop the skills needed to work in the design industry. If you love finding new and innovative ways of doing things, mastering new technologies, or using design to help improve our communities, this degree could be perfect for you.

Our design students are based at Te Aro campus just off Cuba Street—known for being a vibrant and lively cultural centre. You'll be studying in the heart of Wellington's design industry and will have lots of opportunities to engage with industry leaders and translate your skills directly into exciting careers.

AT A GLANCE

- ▶ You don't need to have studied any art subjects or to submit a portfolio of design work to study with us.
- ▶ Study at a dedicated campus with state-of-the-art facilities and studio spaces, including our fashion studio and media design lab.
- ▶ You'll work with new and emerging technologies such as 3D printing, animation, visual effects, virtual and mixed realities, and artificial intelligence to give you an edge in the ever-changing design industry.
- ▶ Your classes will help sharpen your skills around incorporating mātauranga Māori into your design process, a key part of becoming a conscious and inclusive designer.
- ▶ Explore further study options, including programmes we offer at the Miramar Creative Centre, an internationally renowned film and visual effects hub next to studios such as Wētā FX in Wellington's iconic film community.



Unapologetically Distracted, by Kaitlyn Johnston for COMD 241 Narratives / Ngā Paki Ataata.

SUBJECTS YOU CAN STUDY

- ▶ Animation and Visual Effects / Pakiwaituhi me ngā Mariko Ataata
- ▶ Communication Design / Hoahoa ā-Whakakōrero
- ▶ Design for Social Innovation / Hoahoa mō te Auahatanga ā-Papori
- ▶ Fashion Design Technology / Hangarau Hoahoa ā-Kākahu
- ▶ Game Design / Hoahoa ā-Kemu
- ▶ Industrial Design / Hoahoa ā-Ahumahi
- ▶ Interaction Design / Hoahoa ā-Pāhekoheko
- ▶ Media Design / Hoahoa ā-Arapāho

WHERE CAN DESIGN INNOVATION TAKE YOU?

Our graduates have gone on to pursue a range of careers, such as:

- ▶ animator or visual effects artist
 - ▶ art director
 - ▶ digital costume designer
 - ▶ game designer
 - ▶ graphic designer
 - ▶ mobile or web designer
 - ▶ product designer
 - ▶ service or systems designer
 - ▶ social media manager
 - ▶ user-experience designer.
- i** wgtn.ac.nz/careers
i wgtn.ac.nz/whats-next

Ceramic and plastic bag by Caitlin Tuagalu, created as part of her pakiwaitara (narrative/story) Life in the Pacific, for DSDN 242 Whakapapa Design II / Hoahoa ā haere ake nei II.



FIND OUT MORE



wgtn.ac.nz/study-design





EDUCATION AND TEACHING

TEACHING

Teachers are a vital part of our community, helping future generations grow into intelligent and positive people. Our teaching qualifications incorporate real-world teaching experience in several educational settings, from early childhood teaching centres to primary and secondary schools. Whatever path you choose, you'll develop the knowledge and skills to teach and inspire.

The programmes offered by Te Whānau o Ako Pai—Faculty of Education give graduates the skills to take on this responsibility with confidence, and to enjoy the excitement, creativity, and fun of working with children. We offer a strong focus on bicultural practice and you will benefit from our staff's extensive professional experience across diverse education services.

EARLY CHILDHOOD TEACHING

Early childhood teachers lead the way for young children to have successful futures in their education and later life. If you're interested in an exciting, fun, creative, and fulfilling career that makes a difference, then the Tohu Paetahi Whakaako—Te Kōhungahunga—Bachelor of Education (Teaching) Early Childhood (BEd(Tchg)EC) might be for you. We'll teach you how to become a skilled teacher and confident leader through 24 weeks of teaching experience over three years in a range of early childhood services, including education and care centres and kindergartens.



EDUCATION

Education empowers people to think creatively and critically for themselves. By studying Education, you'll understand our education system and be able to analyse and make your own judgements on the way we educate the next generation. You'll learn about education from many angles, such as education theory, Māori and Pacific education, policy, and youth studies. Education can be studied as a major within the Bachelor of Arts—see page 46 for more information.

EDUCATIONAL PSYCHOLOGY

Interested in how education and psychology can be studied together to make a difference? When you study Educational Psychology, you'll learn the psychology behind human development and learning, and understand how to support children and young people who are experiencing social, emotional, or learning difficulties. Educational Psychology can be studied as a major within the Bachelor of Arts and Bachelor of Psychology—see pages 46 and 70 for more information.

PRIMARY OR SECONDARY TEACHING

Teaching is a rewarding career where you can use your communication, creativity, and leadership skills to change lives. Your first step towards becoming a teacher is to complete an undergraduate degree. It's important to choose an undergraduate degree that will prepare you for the teaching qualification you want to study.

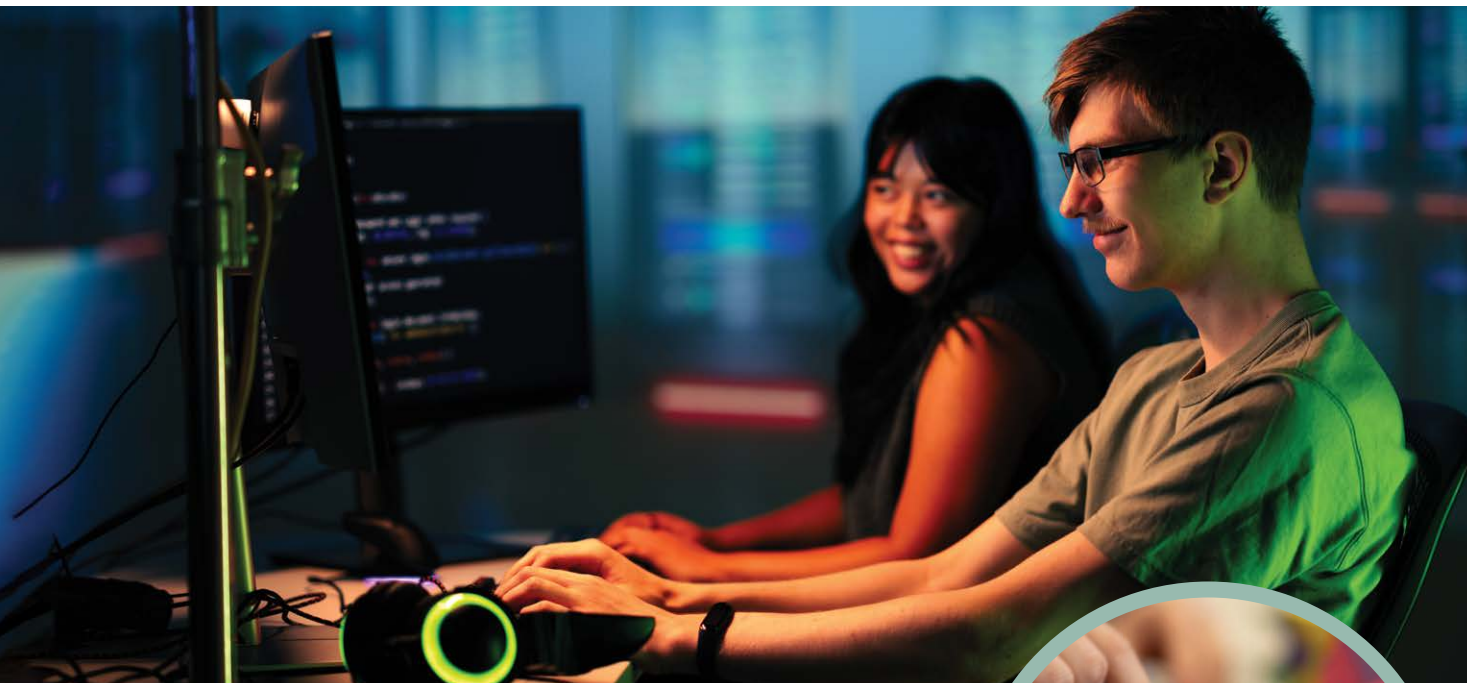
- ▶ **Primary teaching:** Select a degree that allows you to study a broad range of curriculum subjects, such as English, languages, maths, sciences, and social sciences.
- ▶ **Secondary teaching:** You will need an in-depth knowledge of the subject you want to teach. For example, if you want to be a maths teacher, you will need to study maths in your undergraduate degree.

Once you have completed your undergraduate degree, you can apply to our teacher training programme.



FIND OUT MORE

 wgtn.ac.nz/study-teaching



ENGINEERING

Do you want to make the next big technological breakthrough, understand the ins and outs of how things work, or develop a game-changing mobile app? Our Tohu Paetahi Pūkaha (Hōnore)—Bachelor of Engineering with Honours (BE(Hons)) has an emphasis on digital-focused technology and using creativity to solve real-world problems. Right from the start of your degree you'll gain a solid background in engineering, grounded in mathematics and science, through the design and implementation of real-world systems.

Our Engineering degree is recognised all over the world, and our students are sought-after employees based on the training they receive in project management, entrepreneurship, and ethics alongside industry work experience. If you're keen to use and create technology that helps make the world a better place, studying Engineering with us might be an excellent choice for you.



FIND OUT MORE

i wgtn.ac.nz/study-engineering

AT A GLANCE

- ▶ You'll learn from leading experts in the field of engineering and computer science.
- ▶ Gain hands-on experience working in emerging fields such as artificial intelligence, data science, and mixed reality.
- ▶ The majors in the BE(Hons) are professionally accredited, making the degree internationally recognised.
- ▶ Te Herenga Waka was the first university in Aotearoa to offer school leavers the chance to study exciting programmes such as Artificial Intelligence and Cybersecurity Engineering.
- ▶ Studying Engineering will take you four years to make sure you have built up the skills needed to complete 800 hours of work experience.
- ▶ Don't fancy doing a four-year degree? You can take subjects related to engineering under a Bachelor of Science to keep your study options flexible.

SUBJECTS YOU CAN STUDY

- ▶ Cybersecurity Engineering
- ▶ Electrical and Electronic Engineering
- ▶ Software Engineering

RELATED SUBJECTS

In the Bachelor of Science (see page 72), students can take related subjects, including:

- ▶ Actuarial Science
- ▶ Artificial Intelligence
- ▶ Computer Science
- ▶ Data Science
- ▶ Electronic and Computer Systems
- ▶ Mathematics
- ▶ Statistics.

i wgtn.ac.nz/bsc

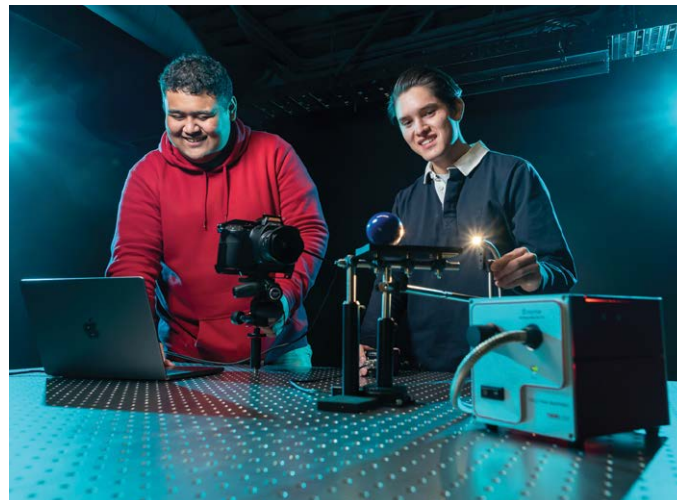
WHICH SCHOOL SUBJECTS WILL YOU NEED?

If you'd like to enrol in any Engineering subjects or related subjects in Science, you should ideally have 16 NCEA Level 3 credits in Mathematics or 12 Achievement Standard credits in NCEA Level 3 Maths, excluding certain statistics standards. Get in touch with our future student advisers if you have more questions about specific entry requirements.

WHERE CAN ENGINEERING TAKE YOU?

Our graduates have gone on to pursue careers in:

- ▶ emerging start-up tech companies
 - ▶ governance risk and compliance
 - ▶ mobile app, web, or game development
 - ▶ multimedia programming
 - ▶ robotics engineering
 - ▶ security management
 - ▶ web development or testing.
- i** wgtn.ac.nz/careers
i wgtn.ac.nz/whats-next



ENVIRONMENT AND SOCIETY

Turn your passion for the environment into meaningful action with the Tohu Paetahi Taiao me te Pāpori—Bachelor of Environment and Society (BEnvSoc). This degree tackles significant environmental questions and challenges through different viewpoints—and you can choose to focus on earth sciences, social sciences, business, design, education, or the humanities. You'll learn the importance of collaboration between different perspectives and industries in solving environmental issues.

Wellington is where environmental action happens. There's no better place to engage with policymakers, collaborate with eco-tech firms, conduct hands-on fieldwork, and find your place to tackle environmental challenges.

AT A GLANCE

- ▶ Our core courses are designed to help you understand the connections between people, their environments, and the social and scientific aspects of environmental change.
- ▶ We offer a range of subjects that address environmental issues from different perspectives, so you'll be able to craft a degree that fits your interests and goals.
- ▶ You'll gain hands-on experience in environmental research by designing, developing, and implementing a research project that addresses environmental issues.


SUBJECTS YOU CAN STUDY

- ▶ Climate Science
- ▶ Cultural Anthropology
- ▶ Design for Social Innovation
- ▶ Development Studies
- ▶ Earth Science
- ▶ Education for the Environment
- ▶ Environmental Design
- ▶ Environmental Humanities
- ▶ Environmental Science
- ▶ Environmental Studies
- ▶ Geography
- ▶ Sustainability and Ethics in Business

WHERE CAN ENVIRONMENT AND SOCIETY TAKE YOU?


Our graduates have gone on to pursue careers such as:

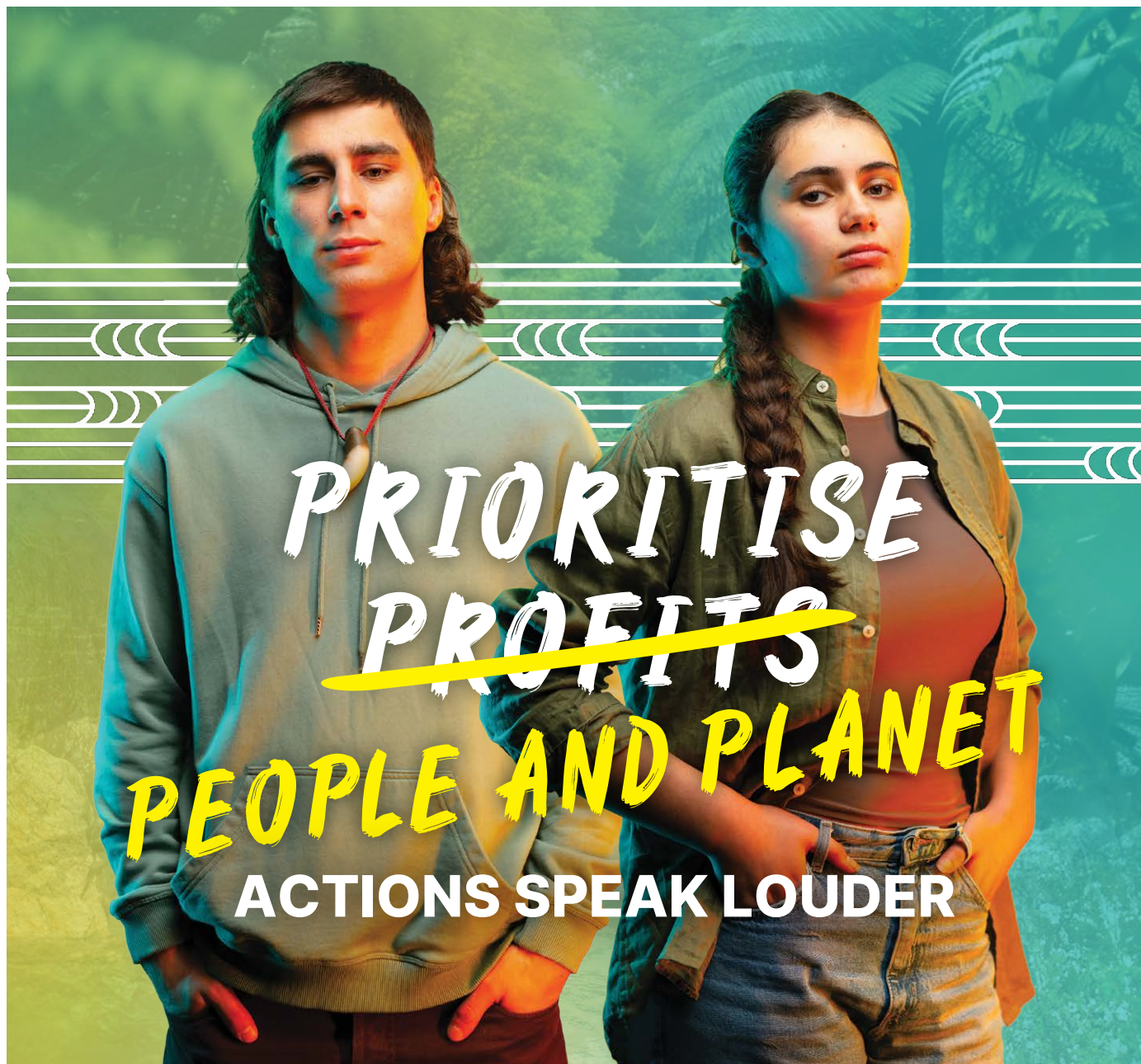
- ▶ environmental scientist
- ▶ environmental and sustainability consultant
- ▶ policy adviser
- ▶ science communicator.

 wgtn.ac.nz/careers



FIND OUT MORE

 wgtn.ac.nz/study-environment-society



GLOBAL STUDIES

In a world where people, organisations, and governments have become more and more connected, we know that local decisions can have global implications. Our Tohu Paetahi Ao Whānui—Bachelor of Global Studies (BGS) will help you navigate this globalised world and become a leader of positive change, growth, and problem-solving. The BGS explores different subject areas through a global lens, so you'll understand the issues at the heart of our globally connected world while developing your knowledge of te ao Māori and Aotearoa's place in the global context.

Our BGS encourages innovation, specialisation, and collaboration across its subjects and includes opportunities for work-related and extracurricular learning, such as internships, overseas exchanges, and summer scholarships. There is also opportunity to participate in our leadership programme.

AT A GLANCE

- ▶ Studying in Wellington, you will connect with change-makers and be ready to launch an exciting career, locally or internationally.
- ▶ Explore the different subjects and approaches covered in the degree, with courses in global studies, intercultural communication, languages, and Māori studies.
- ▶ You'll broaden your cultural knowledge by studying a new language.
- ▶ You'll also be able to select courses from other subjects across the University, tailoring your degree to suit your interests and career goals.



SUBJECTS YOU CAN STUDY

- ▶ Area and Cultural Studies
- ▶ Cultures and Identities
- ▶ Environment and Sustainability
- ▶ Ethical Leadership and Intercultural Communication
- ▶ Global Health and Wellbeing
- ▶ Globalisation, Movement, and Change
- ▶ Human Rights, Justice, and Peace
- ▶ World Affairs and Organisations

WHERE CAN GLOBAL STUDIES TAKE YOU?

Our graduates have gone on to pursue careers in:

- ▶ diplomacy
- ▶ foreign affairs
- ▶ government
- ▶ non-government organisations
- ▶ policy and research
- ▶ public and private organisations
- ▶ teaching
- ▶ tourism.

i [wgtn.ac.nz/careers](https://www.wgtn.ac.nz/careers)

FIND OUT MORE

i [wgtn.ac.nz/study-global-studies](https://www.wgtn.ac.nz/study-global-studies)

HEALTH

The health sector in Aotearoa New Zealand needs people who are passionate about improving health and wellbeing. If you're interested in social justice or becoming an advocate for your local community, or want to tackle some of the biggest issues facing Aotearoa and the world, our Tohu Paetahi Hauora—Bachelor of Health (BHLth) will be perfect for you.

During your studies, you'll learn about health services and policies, social aspects of health, and the impact of health issues on diverse populations. If you want a rewarding career developing better health services, policies, and strategies, the BHLth will help you get there.

You can also explore other subjects that interest you alongside your Health degree, such as Education, Māori Studies, Psychology, or Public Policy. Studying in Wellington, New Zealand's political centre, means you'll benefit from being close to where real change to health policy is made.

AT A GLANCE

- ▶ Learn about a range of different careers in the health sector that you may not have heard about, helping you find a career pathway that suits your interests and passions.
- ▶ Students who take part in our Health internships can work with public sector agencies or non-governmental organisations that focus on health and wellbeing, such as Bee Healthy Regional Dental Service and Sport New Zealand Ihi Aotearoa.
- ▶ This degree has a strong focus on the health and wellbeing of Māori and Pacific peoples, equipping you with the skills to make a difference for these communities.
- ▶ You'll get the chance to take your learning outside the classroom in some exciting new workshops.

SUBJECTS YOU CAN STUDY

- ▶ Health Informatics
- ▶ Health Policy and Innovation
- ▶ Health Promotion
- ▶ Health Psychology
- ▶ Physical Activity and Hauora

WHERE CAN HEALTH TAKE YOU?

Our graduates have gone on to pursue careers such as:

- ▶ health centre manager
- ▶ health educator
- ▶ health information manager
- ▶ health policy analyst
- ▶ Māori or Pasifika health promoter.

You could also work in governmental agencies such as Health New Zealand—Te Whatu Ora or the Ministry of Health—Manatū Hauora.

i [wgtn.ac.nz/careers](https://www.wgtn.ac.nz/careers)

i [wgtn.ac.nz/whats-next](https://www.wgtn.ac.nz/whats-next)



FIND OUT MORE

i [wgtn.ac.nz/study-health](https://www.wgtn.ac.nz/study-health)



LAW

Law contributes to every aspect of life in New Zealand—culture, economy, society, family ties, personal relationships, and our international connections all exist within a legal framework. As a Law student, you'll examine legal texts, case studies, techniques, and principles. Whether you end up practising as a lawyer or working in business or government, we'll show you that laws can solve problems and communicate ideas.

Our Tohu Paetahi Ture—Bachelor of Laws (LLB) is taught in Wellington's historic Government Buildings opposite Parliament and near the courts and legal research libraries. You'll be learning about the law in New Zealand's legal and political hub. This remarkable environment attracts top staff and students from around the world.



FIND OUT MORE

i wgtn.ac.nz/study-laws

AT A GLANCE

- ▶ You don't need to take an entrance exam or have studied any specific subjects at school to study law with us.
- ▶ Completing the law degree will take you four years, to make sure you have built up the skills you need. If you're interested in other subjects, it's also possible to combine the LLB with another degree.
- ▶ After your first year, you'll study at our Pipitea campus in the heart of government and law-making in New Zealand.
- ▶ We use interactive teaching methods and discussion-based learning that will encourage you to communicate ideas, think independently, and evaluate legal principles.
- ▶ If you want to be a lawyer in New Zealand, you'll need to complete a practical professional legal studies course after you complete the LLB.

WHERE CAN LAW TAKE YOU?

Our graduates have gone on to work in legal practice and specialise in areas such as:

- ▶ commercial law
- ▶ criminal law
- ▶ family law
- ▶ international law
- ▶ litigation
- ▶ mediation.

However, completing an LLB doesn't mean you have to become a lawyer. Our graduates have been successful in other areas, such as:

- ▶ academia
- ▶ business
- ▶ creative arts
- ▶ government (for example, the Crown Law office and the Ministry of Foreign Affairs and Trade).

i wgtn.ac.nz/careers





MIDWIFERY

Give back to your community as you help to bring new life—and new parents—into the world. As a student of our Tohu Paetahi Whakawhānau—Bachelor of Midwifery (BMid), you'll learn through lectures, labs, and simulated clinical situations, preparing you for a meaningful career as a midwife. Our first-year students are taught by a range of experts and learn about biology, biomedical science, chemistry, education, and health psychology.

If you study Midwifery, you'll interact and build trust within the community by working with real midwives, women, and pregnant people. Over four years of study, you'll have completed an exciting 2,400 hours of clinical learning experience, starting at our simulation suite at Wellington Regional Hospital and then in placements with practising midwives in the community.



FIND OUT MORE



wgtn.ac.nz/study-midwifery

AT A GLANCE

- ▶ Our Midwifery courses are all run in person, ideal for those who thrive in a practical learning environment.
- ▶ Boost your confidence in a clinical environment by coming to class at Wellington Regional Hospital.
- ▶ Smaller class sizes in your Midwifery courses will allow you to get to know your classmates and receive dedicated support from your teachers.
- ▶ Completing the Midwifery degree will take you four years, so you'll get the summers off to rest or work.
- ▶ After you study with us, you'll be eligible and well-equipped to complete the National Midwifery Examination to practise as a midwife in New Zealand.

WHICH SCHOOL SUBJECTS WILL YOU NEED?

In addition to the University Entrance requirements on page 39, you will need to achieve the following NCEA credits (or equivalent):

Level 2	Level 3
A minimum of 16 credits at Level 2 in Biology	A minimum of 18 credits at Level 3 in Biology, Chemistry, or Physics
A minimum of 16 credits at Level 2 in Chemistry or Physics	A minimum of 16 credits at Level 3 in an English-language rich subject (such as Art History, Classics, Economics, English, Geography, History, or Media Studies)
A further 16 credits at Level 2 in another subject	A further 16 credits at Level 3 in two NCEA University Entrance approved subjects

If you don't think you meet the entry requirements, we encourage you to get in touch with us early to discuss a plan for entering the programme. You can contact the Midwifery team directly at midwifery@vuw.ac.nz

WHERE CAN MIDWIFERY TAKE YOU?

Our graduates have joined the healthcare workforce as registered midwives employed by hospitals or maternity care providers, or self-employed. The responsibilities of a midwife include:

- ▶ supporting parents, babies, and their families through pregnancy, birth, and after the birth
- ▶ supporting the pregnant person during labour and delivery
- ▶ conducting regular check-ups with the pregnant person
- ▶ monitoring baby development
- ▶ prescribing pregnancy and postpartum medications
- ▶ giving advice and support for new parents.

i wgtn.ac.nz/careers

i wgtn.ac.nz/whats-next





MUSIC

Music is a powerful force that allows us to convey emotion, connecting us to our past, to each other, and to the world. If you love listening to and creating music, playing an instrument, or singing, the Tohu Paetahi Puoro—Bachelor of Music (BMus) might be for you.

Our BMus programme offers in-depth training in many performance traditions and styles, and our composition and music technology spaces will help inspire your next musical creation. If you're interested in learning more about different areas of music, we offer subjects in popular, electronic, and film music studies.

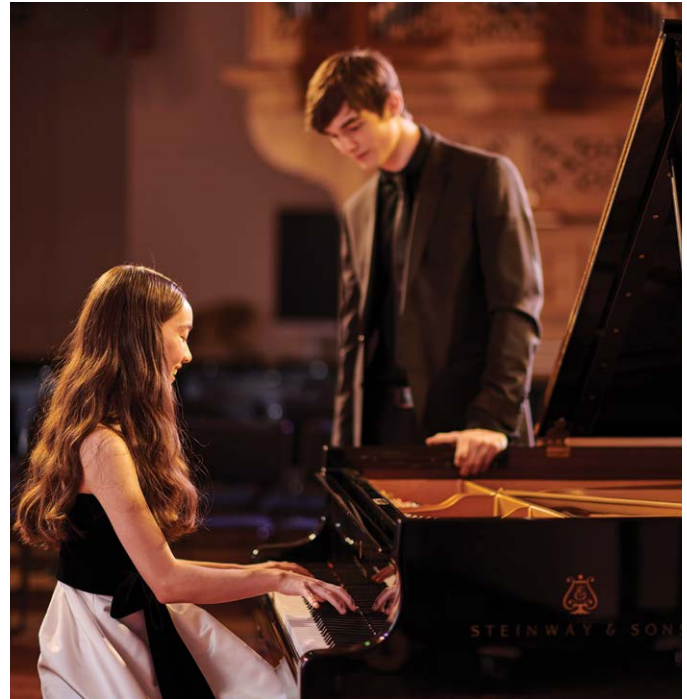
You'll study at the New Zealand School of Music—Te Kōkī (NZSM), a leading music school that offers unparalleled opportunities in New Zealand's capital city. Known as New Zealand's creative capital, Wellington is a hub of musical creativity, home to radio stations, recording studios, and a thriving performance scene. Our strong links with the New Zealand music community, diverse music specialists, and internationally recognised teachers will give you opportunities to work with well-known groups such as the New Zealand Symphony Orchestra, New Zealand String Quartet, and the NZSM Orchestra Te Kōkī Trio.

AT A GLANCE

- ▶ Facilities at the NZSM include Steinway pianos, a collection of historical instruments, the Adam Concert Room, and well-equipped recording and electronic music studios.
- ▶ You'll learn through masterclasses and workshops taught by leading international performers, resident and visiting composers, and music scholars.
- ▶ If you're interested in our performance programmes, you'll have to audition. For more information about the audition application form, audition requirements, and due dates, go to wgtn.ac.nz/nzsm-audition
- ▶ You can also study music as part of the Bachelor of Arts, and can take subjects you love from other areas of study.

SUBJECTS YOU CAN STUDY

- ▶ Classical Performance
- ▶ Composition
- ▶ Digital Music and Audio Production
- ▶ Instrumental/Vocal Composition
- ▶ Jazz Performance
- ▶ Music Studies
- ▶ Performance
- ▶ Popular Music Studies



WHERE CAN MUSIC TAKE YOU?

Our graduates have gone on to pursue a range of careers, including:

- ▶ arts manager
 - ▶ broadcaster
 - ▶ composer
 - ▶ film scorer
 - ▶ musician
 - ▶ music teacher
 - ▶ policy analyst
 - ▶ researcher.
- i** wgtn.ac.nz/careers

FIND OUT MORE

i wgtn.ac.nz/study-music

POPULAR MUSIC

Popular Music spans the globe and is one of the most powerful ways we express ourselves and connect with other people. It takes multiple forms and is an essential force in shaping contemporary culture. The Tohu Paetahi Pao o te Marea—Bachelor of Popular Music (BPM) gives you a platform to gain, develop, and enhance skills essential to popular music, from creative expression to technological production to critical and communication abilities. The BPM is also highly flexible, allowing you to develop both your creative and academic skills, and to explore other subjects that you're passionate about.

As a BPM student in Wellington, you'll be in New Zealand's thriving hub of musical creativity, where local and international musicians perform and record music across the city. You'll study at the New Zealand School of Music—Te Kōkī (NZSM), and will have opportunities to collaborate with peers, engage with skilled and well-known musicians, and use our studios and recording spaces. Our staff are internationally recognised for their work as artists, music technologists, industry experts, and researchers.

AT A GLANCE

- ▶ Facilities at the NZSM include Steinway pianos, a collection of historical instruments, the Adam Concert Room, and well-equipped recording and electronic music studios.
- ▶ You can study for a BPM with no prior formal study of music.
- ▶ Our Electronic Music and Popular Music Studies majors are the first of their kind in New Zealand.
- ▶ You'll develop skills such as leadership, creativity, collaboration, organisation, critical and analytical abilities, and written and verbal communication, among many others.



SUBJECTS YOU CAN STUDY

- ▶ Audio Production and Recording
- ▶ Electronic Music
- ▶ Popular Music Studies
- ▶ Songwriting

WHERE CAN POPULAR MUSIC TAKE YOU?

Our graduates have gone on to pursue a range of careers, including:

- ▶ arts management
 - ▶ broadcasting
 - ▶ composing
 - ▶ film
 - ▶ media
 - ▶ music performance
 - ▶ teaching.
- i** wgtn.ac.nz/careers

FIND OUT MORE

i wgtn.ac.nz/study-popular-music





PSYCHOLOGY

Psychology explores how people think, feel, and act. If you're interested in helping others by learning more about the human brain and behaviour, our Tohu Paetahi Mātai Hinengaro—Bachelor of Psychology (BPsyc) might be for you.

Your degree will start with learning about the different areas of psychology, but you'll also have the option to explore something more specific if one of these areas interests you. You could study how the brain develops, the importance of wellbeing and mental health, or why people commit crimes.

You'll learn from internationally renowned teachers and researchers. Your journey to bringing positive and powerful change for all New Zealanders starts when you study Psychology with us in Wellington.



FIND OUT MORE



wgtn.ac.nz/study-psychology

AT A GLANCE

- ▶ Te Herenga Waka is the first university to offer a specialist Māori Psychology major.
- ▶ We incorporate mātauranga Māori into our courses, ensuring that you'll understand cultural awareness and social responsibility in the context of Te Tiriti o Waitangi.
- ▶ The Psychological Science major equips you with all the skills needed in data analysis, research methodology, and ethics, to prepare you for further study in clinical or forensic psychology.

SUBJECTS YOU CAN STUDY

- | | |
|------------------------------------|---|
| ▶ Psychological Science (required) | ▶ Educational Psychology |
| ▶ Brain Sciences and Mental Health | ▶ Health Psychology |
| ▶ Cognitive Science | ▶ Māori Psychology |
| ▶ Criminal Justice and Psychology | ▶ Mental Health Principles and Applications |
| | ▶ Work and Organisational Psychology |



WHERE CAN PSYCHOLOGY TAKE YOU?

Our graduates have gone on to pursue careers such as:

- ▶ clinical psychologist
- ▶ counsellor
- ▶ forensic specialist
- ▶ learning and development specialist
- ▶ policy researcher or analyst
- ▶ probation officer.

These careers may require further study.

i wgtn.ac.nz/careers

i wgtn.ac.nz/whats-next





SCIENCE

Scientists are future thinkers, ready to tackle the world's biggest problems—from climate change to antibiotic resistance. If you're curious about the world around you and enjoy making new discoveries and solving problems, our Tohu Paetahi Pūtaiao—Bachelor of Science (BSc) could be for you. You'll explore scientific theories and apply them in different contexts, while also developing skills in collecting, analysing, and understanding data.

Wellington is the science capital of Aotearoa New Zealand, with the highest number of science organisations in the country. Studying Science with us will take you beyond the lecture theatre, as you'll have the opportunity to learn in modern labs and world-class facilities, and take part in hands-on laboratories and field trips.

AT A GLANCE

- ▶ With world-renowned research centres and government institutes right on our doorstep, Wellington is the science capital of Aotearoa. There's no better place to study Science.
- ▶ Our Science degree is super flexible, allowing you to study more than one subject you love (even if one is outside science).
- ▶ Studying for a BSc will equip you with highly employable skills such as analysis, critical thinking, and data management.
- ▶ Te Herenga Waka's connections with organisations mean there are opportunities for internships and work experience to boost your career opportunities.

SUBJECTS YOU CAN STUDY

- | | |
|-----------------------------------|-------------------------|
| ▶ Actuarial Science | ▶ Environmental Science |
| ▶ Artificial Intelligence | ▶ Environmental Studies |
| ▶ Biology | ▶ Geography |
| ▶ Biotechnology | ▶ Information Systems |
| ▶ Cell and Molecular Bioscience | ▶ Marine Biology |
| ▶ Chemistry | ▶ Mathematics |
| ▶ Climate Science | ▶ Physics |
| ▶ Computer Science | ▶ Psychological Science |
| ▶ Data Science | ▶ Science Communication |
| ▶ Development Studies | ▶ Science in Society |
| ▶ Earth Science | ▶ Space Science |
| ▶ Ecology and Biodiversity | ▶ Statistics |
| ▶ Electronic and Computer Systems | |

WHICH SCHOOL SUBJECTS WILL YOU NEED?

Some majors within the BSc have specific NCEA Level 3 (or equivalent) entry requirements. You can check entry requirements by visiting our website. However, if you're interested in a particular major but don't have sufficient credits, there are alternative pathways available—our future student advisers can give you more information (see page 76).

WHERE CAN SCIENCE TAKE YOU?

Our graduates go on to a wide variety of careers, including:

- | | |
|-------------------------|------------------------------------|
| ▶ astronomer | ▶ researcher |
| ▶ conservationist | ▶ science policy writer or analyst |
| ▶ geologist | ▶ teacher |
| ▶ laboratory technician | ▶ weather forecaster. |
| ▶ marine biologist | |
| ▶ physicist | |

These careers may require further study.

i wgtn.ac.nz/careers

i wgtn.ac.nz/whats-next



FIND OUT MORE

i wgtn.ac.nz/study-science

EVENTS

JOIN US FOR OPEN DAY

Our Open Day is on Friday 22 August 2025. Come along and check out our campuses, talk to students and staff, and find out about the different subjects you can study at the University. There's lots to do on Open Day, with subject information sessions, tours of our campuses and halls of residence, and opportunities to check out our student services, clubs, and extracurricular activities.

 wgtn.ac.nz/open-day

VISIT DURING SCHOOL HOLIDAYS

If you're thinking of visiting us during the school holidays, be sure to check out what's happening on campus. During the school holidays, we will have additional campus tours, hall tours, and UNI101 (intro to tertiary study) sessions on offer. You can also book in to get some one-to-one course advice with our Future Students team (see page 76).



 **FIND OUT MORE**



INFORMATION EVENINGS

Come along to a 2025 information evening and find out about study at Te Herenga Waka. Bring your whānau and learn about our study options, accommodation, admission requirements, scholarships, extracurricular activities, and student support. If you can't make it in person, join us online for a digital information session.

Wednesday 7 May	Wellington
Tuesday 13 May	Palmerston North
Thursday 15 May	New Plymouth
Wednesday 21 May	Hawke's Bay
Wednesday 28 May	Tauranga
Thursday 29 May	Hamilton
Wednesday 4 June	Christchurch
Monday 9 June	Auckland
Wednesday 18 June	Nelson

**DIGITAL INFORMATION
EVENING
16 JULY**



CONNECT WITH US

Throughout the year, there are many ways for you to get support with planning your studies. Come and take a tour, book in to get some advice, and sign up for updates.

TAKE A CAMPUS TOUR

Next time you're in Wellington, join a tour of our campuses. Kelburn campus tours run every Monday and Friday at 11 am. Te Aro campus tours run on Thursdays at 1 pm, and Pipitea campus tours are on Thursdays at 11 am. Book online or by phone.

i [wgtn.ac.nz/visit-us](https://www.wgtn.ac.nz/visit-us)

TAKE A HALL TOUR

Book a hall tour to learn more about our halls of residence and find out about events. You can visit the halls on Open Day, which is held in August each year (see page 74). You can also book a hall tour during school holidays, or contact the hall directly to make an appointment to visit at another time. If you're planning to see more than one hall on the same day, make sure you allow at least 40 minutes to cover the tour and the time to travel to the next hall.

i [wgtn.ac.nz/our-halls](https://www.wgtn.ac.nz/our-halls)

INTERNATIONAL STUDENTS

If you are an international student wanting to visit the University, get in touch with Te Kahupapa—Wellington University International. You can book in for tailored advice over the phone and we also hold international student events throughout the year.

i [wgtn.ac.nz/ise](https://www.wgtn.ac.nz/ise)



COURSE ADVICE AND PLANNING

Our Future Students team offers expert advice on joining Te Herenga Waka, choosing your subjects, and planning your degree. Book in for an appointment in person (Auckland and Wellington only), by phone, or over Zoom to discuss your study plans at any point in the year.

i [wgtn.ac.nz/course-planning](https://www.wgtn.ac.nz/course-planning)

STAY IN TOUCH

Sign up to receive updates on events and key dates via email.

i [wgtn.ac.nz/keep-in-touch](https://www.wgtn.ac.nz/keep-in-touch)

Follow us on social media

f facebook.com/vicuniwgtn

@ [wgtn.ac.nz/instagram](https://www.wgtn.ac.nz/instagram)

THE UNIVERSITY'S CAMPUSES AND HALLS





VICTORIA UNIVERSITY OF
WELLINGTON
TE HERENGA WAKA

YOUR INTRO

2026